

WAAS CH 65722 W31A	APP CRS 310°	Rwy Ldg TDZE Apt Elev	6758 1345 1354
--	------------------------	-----------------------------	---

RNAV (GPS) RWY 31

RANGE RGNL (HIB)

RNP APCH - GPS.

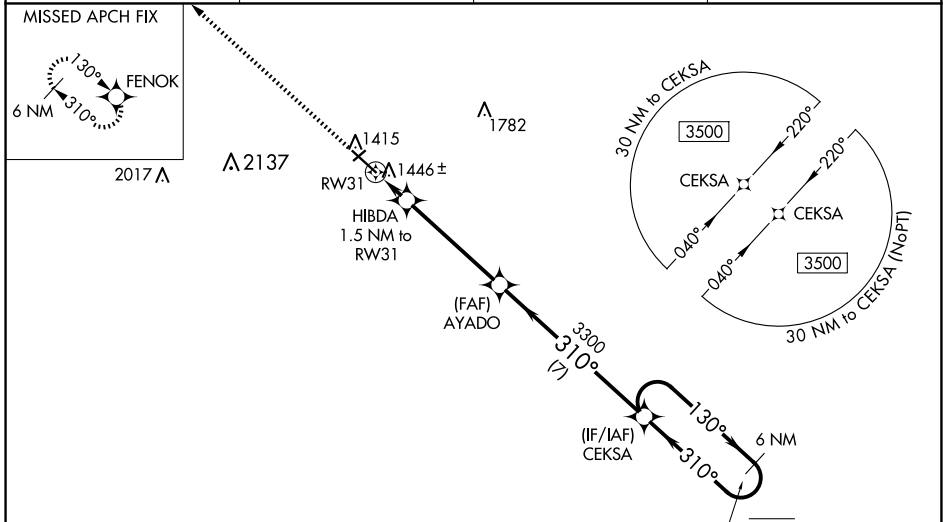
⚠ Baro-VNAV and VDP NA when using Eveleth altimeter setting. For uncompensated Baro-VNAV systems, LNAV/VNAV NA below -17°C or above 54°C. When local altimeter setting not received, use Eveleth altimeter setting and increase LPV DA to 1581 feet; increase LNAV/VNAV DA to 1643 feet; increase all MDAs 40 feet; and Circling visibility Cat C ¼ SM. For inop ALS, increase LNAV/VNAV all Cats visibility to ¾ SM, LNAV Cat C/D to 1 SM. For inop ALS when using Eveleth altimeter setting, increase LNAV/VNAV all Cats visibility to ¾ SM.

MALSR

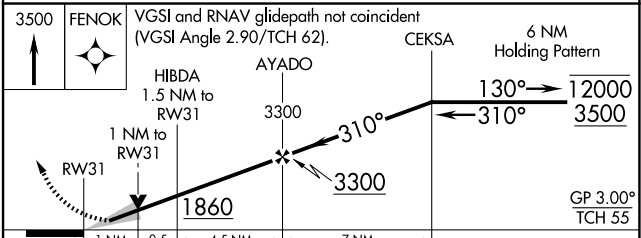
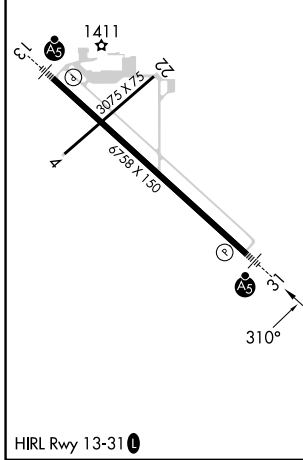
AS

MISSED APPROACH: Climb to 3500 direct FENOK and hold.

ASOS 126.425	DULUTH APP CON 125.45 233.7	CLNC DEL 127.4	UNICOM 123.0 (CTAF) 0
------------------------	---------------------------------------	--------------------------	---------------------------------



ELEV 1354	D	TDZE 1345
-----------	----------	-----------



CATEGORY	A	B	C	D
LPV DA		1545-½	200 (200-½)	
LNAV/VNAV DA		1607-½	262 (300-½)	
LNAV MDA	1700-½	355 (400-½)	1700-⅝	355 (400-⅝)
CIRCLING	1900-1	546 (600-1)	1920-1½ 566 (600-1½)	1980-2 626 (700-2)