

LOC I-HIB <b>108.75</b>	APP CRS <b>310°</b>	Rwy Idg TDZE Apt Elev	<b>6758</b> <b>1345</b> <b>1354</b>
----------------------------	------------------------	-----------------------------	---

# ILS or LOC RWY 31

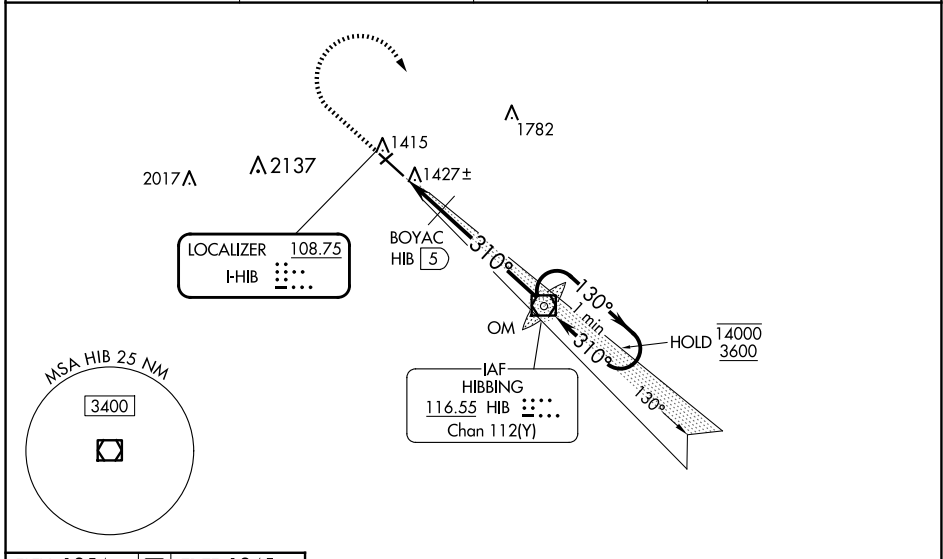
RANGE RGNL (HIB)

**⚠** VDP NA when using Eveleth altimeter setting. Caution opposing ILS continuously on. When local altimeter setting not received, use Eveleth altimeter setting and increase S-ILS 31 DA to 1581 feet; increase all MDAs 40 feet and increase S-LOC 31 Cat C/D visibility ½ SM and Circling Cat C ¼ SM. Increase BOYAC fix minimums S-LOC 31 Cat C/D visibility ½ SM and Circling Cat C ¼ SM. #DME from HIB VOR/DME. DME use requires simultaneous reception of I-HIB and HIB DME. \*1780 when using Eveleth altimeter setting, increase BOYAC fix minimums S-LOC 31 Cat C/D visibility to 1 SM.

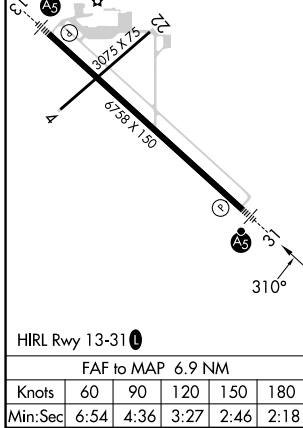
**MALSRL**

**MISSED APPROACH:** Climb to 2500 then climbing right turn to 3600 direct HIB VOR/DME and hold.

ASOS <b>126.425</b>	DULUTH APP CON <b>125.45 233.7</b>	CINCL DEL <b>127.4</b>	UNICOM <b>123.0 (CTAF)</b>
------------------------	---------------------------------------	---------------------------	-------------------------------



ELEV 1354	<b>D</b>	TDZE 1345
-----------	----------	-----------



2500	3600	HIB	HIB VOR/DME OM	One Minute Holding Pattern
		BOYAC HIB (5)	3558	14000 3600
		HIB (6.9)	1740*	GS 2.90° TCH 60
CATEGORY	A	B	C	D
S-ILS 31	1545-½ 200 (200-½)			
S-LOC 31	1740-½	395 (400-½)	1740-⅝	395 (400-⅝)
CIRCLING	1900-1	546 (600-1)	1920-1½	1980-2 626 (700-2)
# BOYAC FIX MINIMUMS				
S-LOC 31	1680-½ 335 (400-½)			
CIRCLING	1900-1	546 (600-1)	1920-1½	1980-2 626 (700-2)

NC-1, 15 MAY 2025 to 12 JUN 2025

NC-1, 15 MAY 2025 to 12 JUN 2025