

WAAS CH <b>78104</b> <b>W27A</b>	APP CRS <b>264°</b>	Rwy Idg TDZE <b>843</b> Apt Elev <b>845</b>	<b>6701</b> <b>843</b> <b>845</b>
--	------------------------	---	---

# RNAV (GPS) RWY 27R

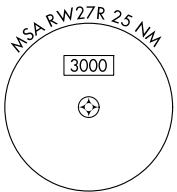
GRAND FORKS INTL (GFK)

RNP APCH - GPS.

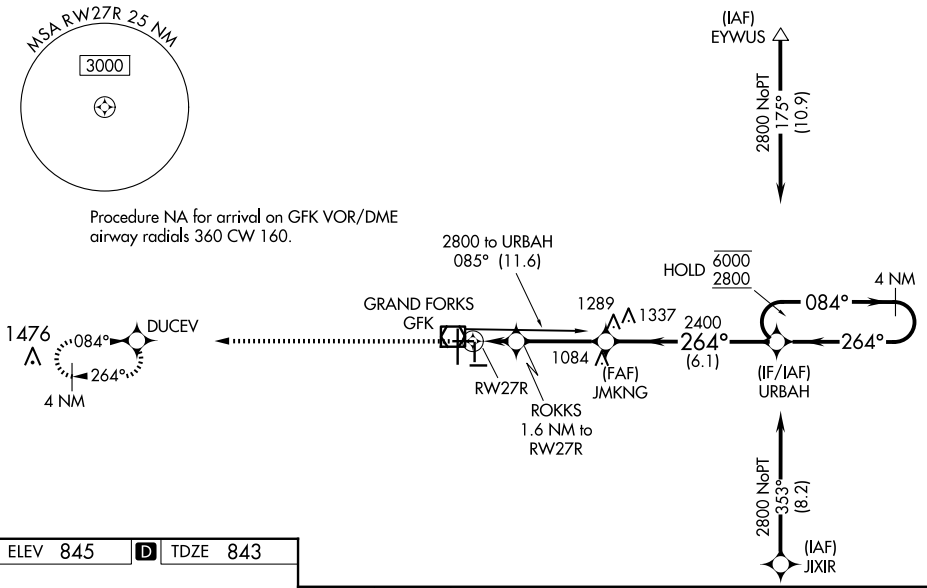
**⚠** Baro-VNAV and VDP NA when using KKN altimeter setting. For uncompensated Baro-VNAV systems, LNAV/VNAV NA below -21°C or above 54°C. When local altimeter setting not received, use KKN altimeter setting and increase LPV DA to 1104 feet and all visibilities 1/8 SM. Increase LNAV/VNAV DA to 1178 feet and all visibilities 1/8 SM. Increase all MDAs 80 feet and LNAV visibility Cat C/D 3/8 SM, and Circling visibility Cat C 1/4 SM.

MISSED APPROACH: Climb to 4000 direct DUCEV and hold, continue climb-in-hold to 4000.

ATIS <b>119.4</b>	GRAND FORKS APP CON ★ <b>118.1 318.1</b>	GRAND FORKS TOWER★ <b>118.4(CTAF) 350.35</b>	GND CON <b>124.575</b>	CLNC DEL <b>135.725</b>	UNICOM <b>122.95</b>
----------------------	---	---	---------------------------	----------------------------	-------------------------



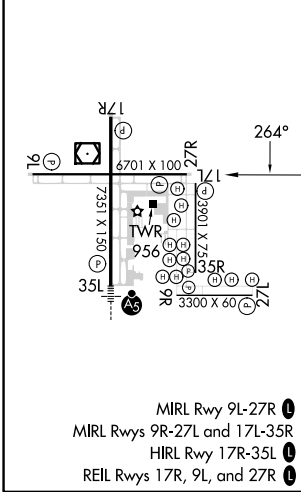
Procedure NA for arrival on GFK VOR/DME airway radials 360 CW 160.



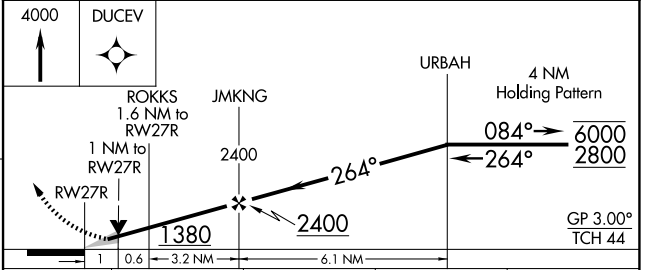
NC-1, 15 MAY 2025 to 12 JUN 2025

NC-1, 15 MAY 2025 to 12 JUN 2025

ELEV 845	<b>D</b>	TDZE 843
----------	----------	----------



MIRL Rwy 9L-27R **①**  
 MIRL Rwys 9R-27L and 17L-35R **②**  
 HIRL Rwy 17R-35L **③**  
 REIL Rwys 17R, 9L, and 27R **④**



CATEGORY	A	B	C	D
LPV DA		1043-3/4	200 (200-3/4)	
LNAV/VNAV DA		1117-7/8	274 (300-7/8)	
LNAV MDA		1220-1	377 (400-1)	
<b>C</b> CIRCLING	1260-1 415 (500-1)	1300-1 455 (500-1)	1400-1 1/2 555 (600-1 1/2)	1420-2 575 (600-2)