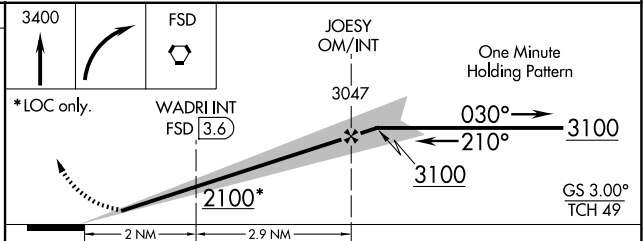
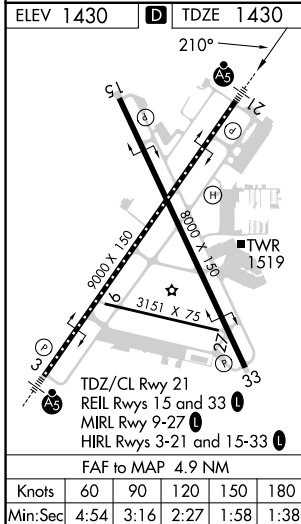
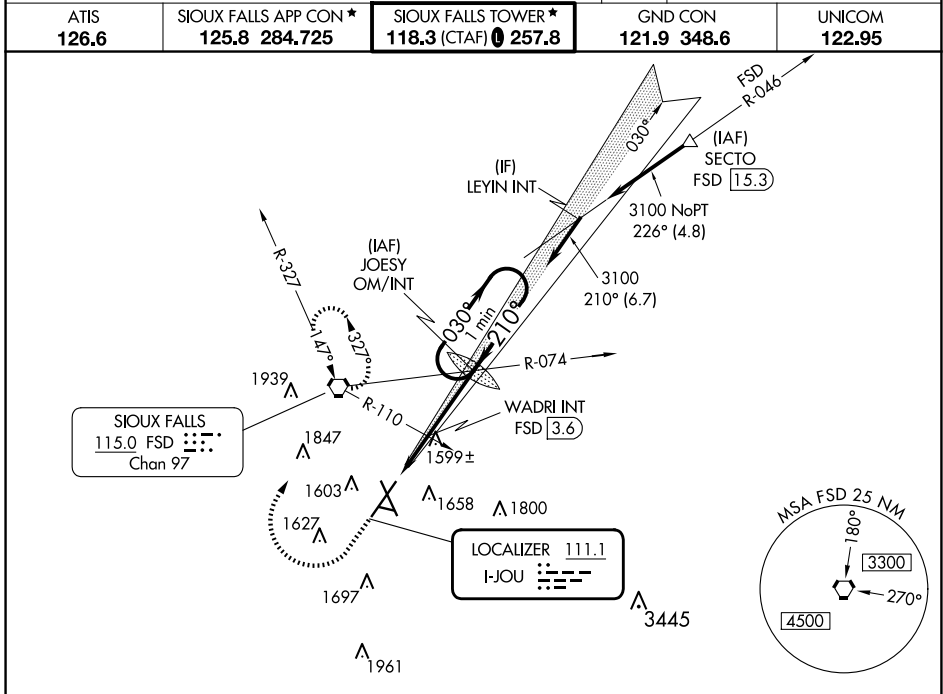


LOC I-JOU <b>111.1</b>	APP CRS <b>210°</b>	Rwy Idg <b>8999</b> TDZE <b>1430</b> Apt Elev <b>1430</b>
---------------------------	------------------------	---

# ILS or LOC RWY 21

JOE FOSS FLD (FSD)

  -31°C	For inoperative MALSRR increase S-ILS all Cats visibility to ¾ mile, increase S-LOC 21 Cat C/D visibility to 1½ mile. When using WADRI FIX minimums, increase S-LOC 21 Cat C/D visibility to 1 mile.		 MISSED APPROACH: Climb to 3400 then right turn direct FSD VORTAC and hold.
	ATIS <b>126.6</b>	SIOUX FALLS APP CON * <b>125.8 284.725</b>	SIOUX FALLS TOWER * <b>118.3 (CTAF) 0 257.8</b>
		UNICOM <b>122.95</b>	



CATEGORY	A	B	C	D
S-ILS 21	1630/18 200 (200-½)			
S-LOC 21	2100/24	670 (700-½)	2100-1½	670 (700-1½)
<b>C</b> CIRCLING	2100-1	670 (700-1)	2100-1¾	2200-2½
WADRI FIX MINIMUMS				
S-LOC 21	1800/24	370 (400-½)	1800/35	370 (400-¾)
<b>C</b> CIRCLING	1960-1	1980-1	2060-1¾	2200-2½
	530 (600-1)	550 (600-1)	630 (700-1¾)	770 (800-2½)

NC-1, 15 MAY 2025 to 12 JUN 2025

NC-1, 15 MAY 2025 to 12 JUN 2025