

WAAS CH 61032 W30A	APP CRS 305°	Rwy Idg TDZE Apt Elev	4027 1056 1060
--	------------------------	-----------------------------	---

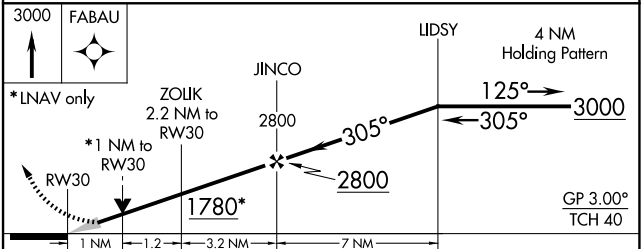
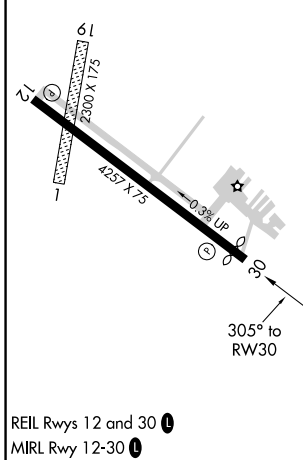
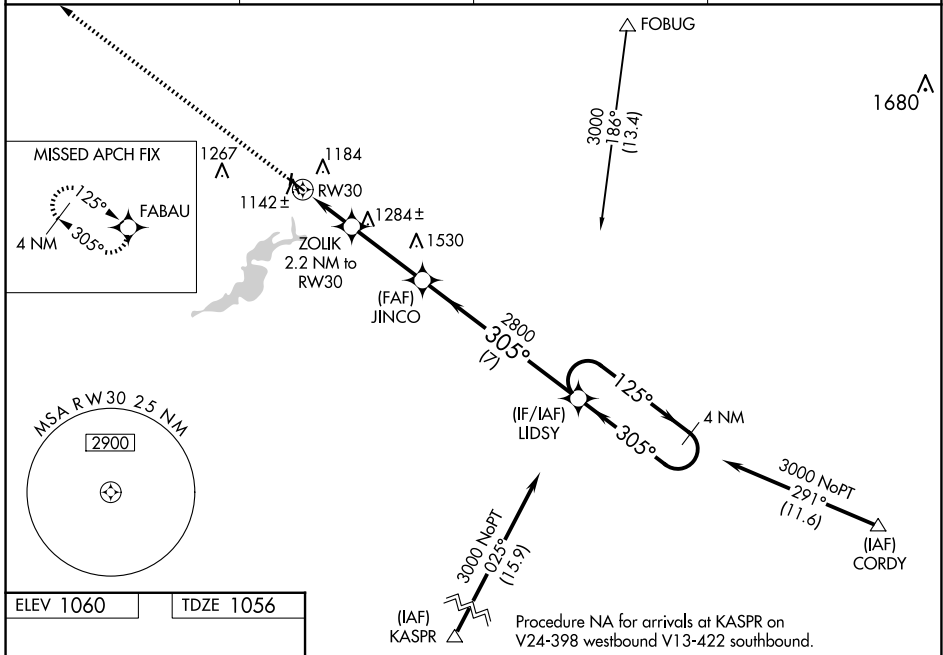
RNAV (GPS) RWY 30

FARIBAULT MUNI-LIZ WALL STROHFUS FLD (F'BL)

⚠ For uncompensated Baro-VNAV systems, LNAV/VNAV NA below -17°C (2°F) or above 54°C (130°F). DME/DME RNP-0.3 NA. When local altimeter setting not received, use Owatonna altimeter setting and increase all DA 41 feet and all MDA 60 feet; increase LNAV Cat C visibility 1/8 mile. Baro-VNAV and VDP NA when using Owatonna altimeter setting. Circling NA to Rwy 1 and 19.

MISSED APPROACH: Climb to 3000 direct FABAU and hold.

AWOS-3 120.2	MINNEAPOLIS APP CON 134.7 284.7	GCO 121.725	UNICOM 122.8 (CTAF) 0
------------------------	---	-----------------------	---------------------------------



CATEGORY	A	B	C	D
LPV DA		1306-1 250 (300-1)		NA
LNAV/VNAV DA		1306-1 250 (300-1)		NA
LNAV MDA		1400-1 344 (400-1)		NA
CIRCLING	1520-1	460 (500-1)	1740-2 680 (700-2)	NA

NC-1, 15 MAY 2025 to 12 JUN 2025

NC-1, 15 MAY 2025 to 12 JUN 2025