

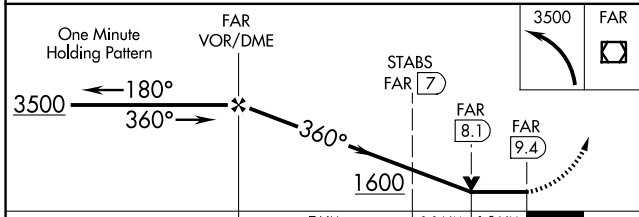
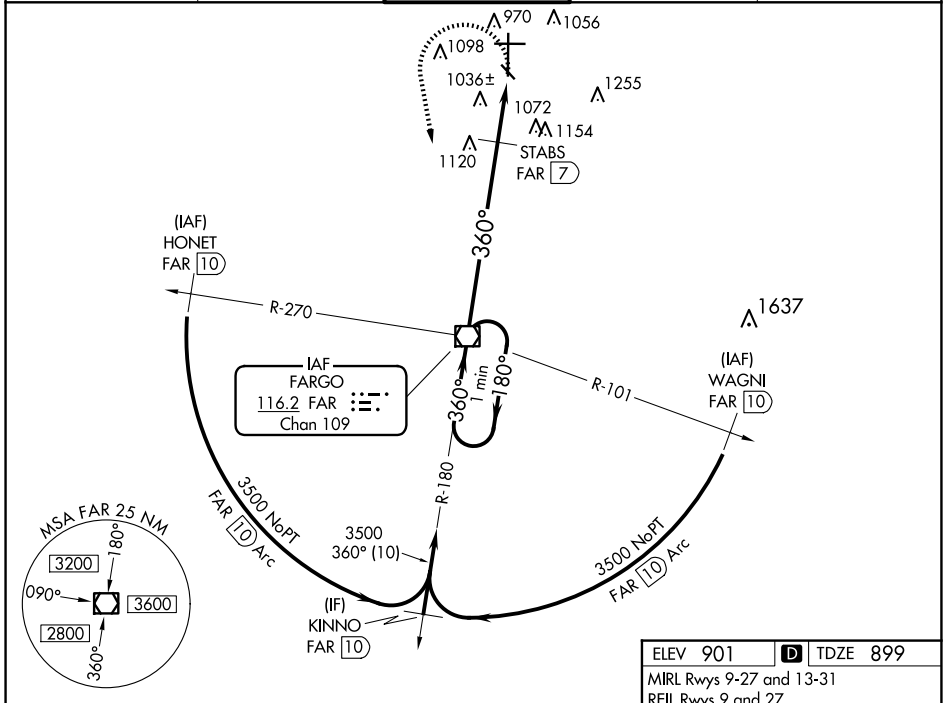
VOR/DME FAR 116.2 Chan 109	APP CRS 360°	Rwy Idg TDZE 899 Apt Elev 901
--	------------------------	---

VOR RWY 36

HECTOR INTL (FAR)

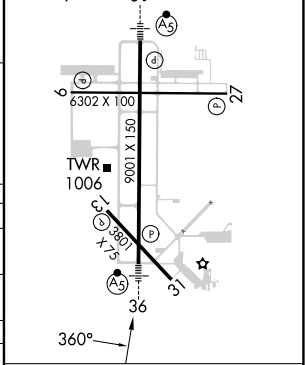
For inop MALSRS, increase S-36 Cat E visibility to 2½ miles. STABS Fix Minimums: For inop MALSRS, increase S-36 Cat E visibility to 1¾ mile.		MISSED APPROACH: Climbing left turn to 3500 direct FAR VOR/DME and hold.

ATIS 124.5 379.2	FARGO APP CON 120.4 377.15	FARGO TOWER 133.8 290.4	GND CON 121.9 348.6	CINC DEL 121.9 348.6
----------------------------	--------------------------------------	-----------------------------------	-------------------------------	--------------------------------



ELEV 901 TDZE 899

MRL Rwy 9-27 and 13-31
REIL Rwy 9 and 27
HIRL Rwy 18-36 81



CATEGORY	A	B	C	D	E
S-36	1600/24	701 (700-½)	1600-1½ 701 (700-1½)	1600-1¾ 701 (700-1¾)	1600-2 701 (700-2)
CIRCLING	1600-1	699 (700-1)	1600-2 699 (700-2)	1620-2¼ 719 (700-2¼)	1620-2½ 719 (700-2½)
STABS FIX MINIMUMS					
S-36	1380/24	481 (500-½)	1380/40 481 (500-¾)	1380/50 481 (500-1)	1380/60 481 (500-1½)
CIRCLING	1380-1	479 (500-1)	1520-1¾ 619 (700-1¾)	1620-2¼ 719 (800-2¼)	1620-2½ 719 (800-2½)

FAR to MAP 9.4 NM					
Knots	60	90	120	150	180
Min:Sec	9:24	6:16	4:42	3:46	3:08

NC-1, 15 MAY 2025 to 12 JUN 2025

NC-1, 15 MAY 2025 to 12 JUN 2025