

LOC I-DLH <b>110.3</b>	APP CRS <b>093°</b>	Rwy Idg <b>10062</b> TDZE <b>1428</b> Apt Elev <b>1428</b>
---------------------------	------------------------	--

# ILS RWY 9 (CAT II)

## DULUTH INTL (DLH)

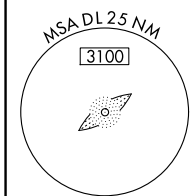
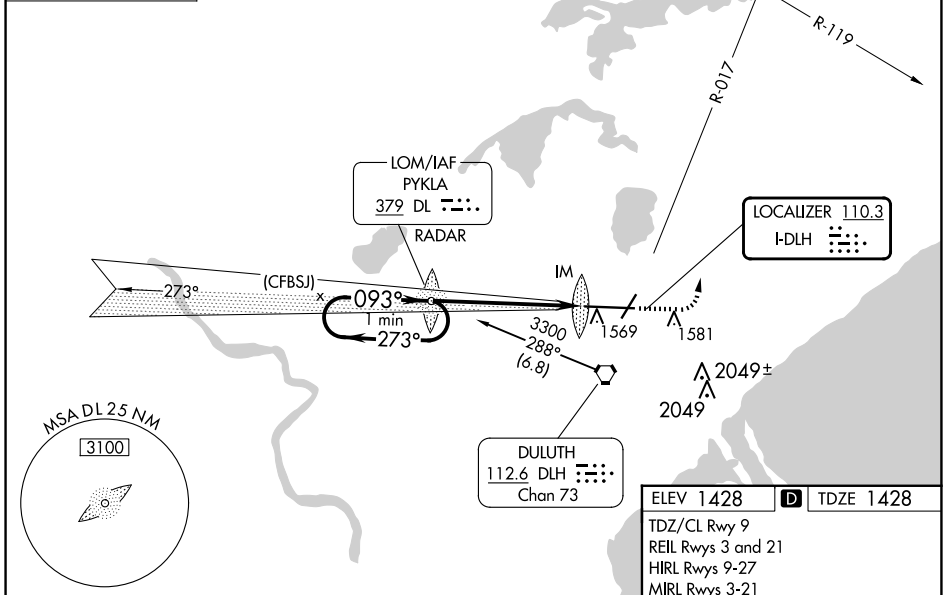
ASR ADF or RADAR required.	ALSF-2	MISSED APPROACH: Climb to 3000 then climbing left turn to 4500 on heading 320° and on DLH VORTAC R-017 to CHERL INT/DLH 15 DME and hold.
-------------------------------	--------	--

ATIS <b>124.1 270.1</b>	DULUTH APP CON <b>125.45 233.7</b>	DULUTH TOWER <b>118.3 257.8</b>	GND CON <b>121.9 348.6</b>
----------------------------	---------------------------------------	------------------------------------	-------------------------------

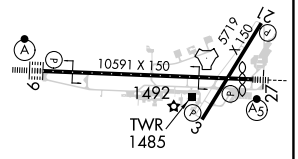
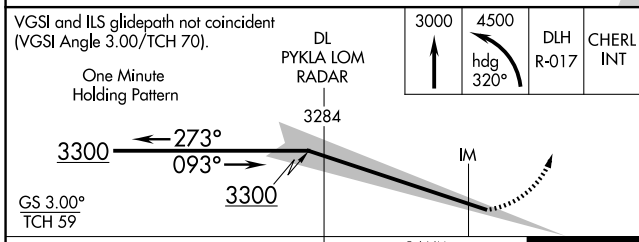
ALTERNATE MISSED APCH FIX

PYKLA  
 DL ---  
 379  
 RADAR

**ADF or RADAR REQUIRED**



ELEV 1428	<b>D</b> TDZE 1428
TDZ/CL Rwy 9 REIL Rwy 3 and 21 HIRL Rwy 9-27 MIRL Rwy 3-21	



CATEGORY	A	B	C	D
S-ILS 9	RA 101/12 100 DA 1528			

**CATEGORY II ILS - SPECIAL AIRCREW & AIRCRAFT CERTIFICATION REQUIRED**

NC-1, 15 MAY 2025 to 12 JUN 2025

NC-1, 15 MAY 2025 to 12 JUN 2025