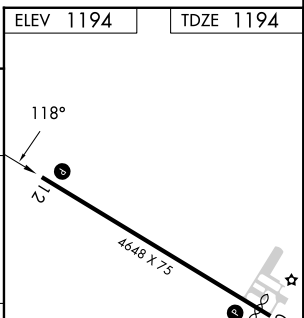
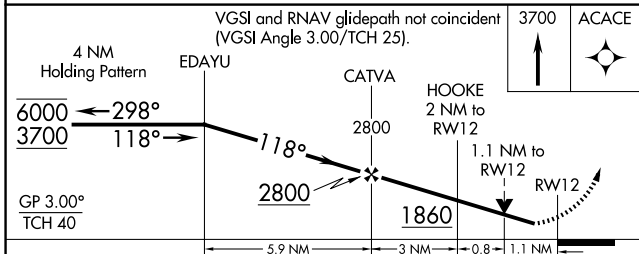
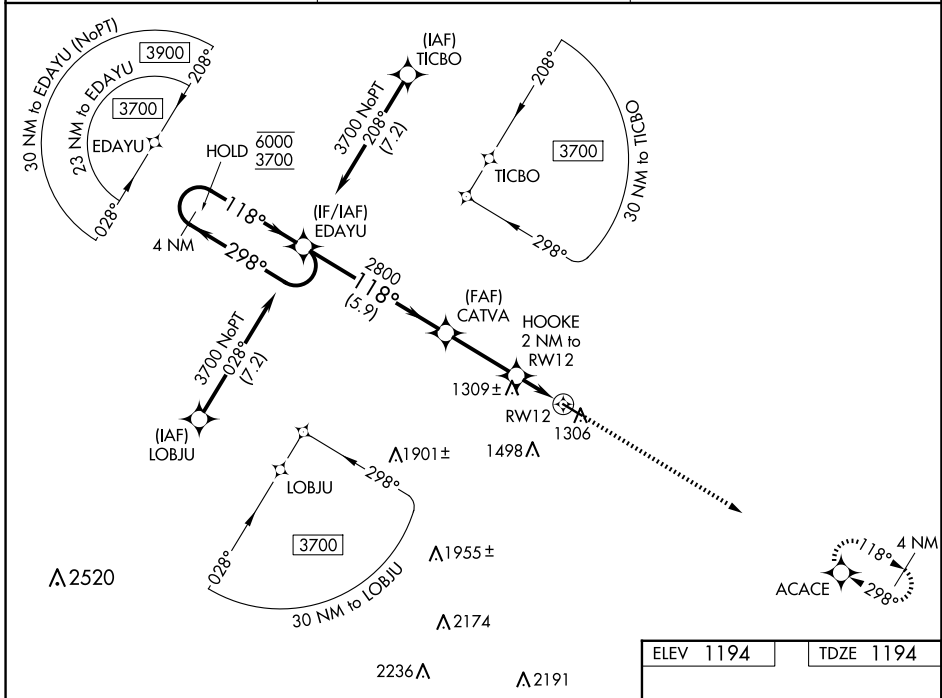


WAAS CH <b>56418</b> <b>W12A</b>	APP CRS <b>118°</b>	Rwy ldg TDZE Apt Elev	<b>4648</b> <b>1194</b> <b>1194</b>
--	------------------------	-----------------------------	---

# RNAV (GPS) RWY 12

MYERS FLD (CNB)

RNP APCH - GPS.		MISSED APPROACH: Climb to 3700 direct ACACE and hold.
Rwy 12 helicopter visibility reduction below 3/4 SM NA. For uncompensated Baro-VNAV systems, LNAV/VNAV NA below -17°C or above 54°C.		
AWOS-3 <b>118.575</b>	MINNEAPOLIS CENTER <b>128.5 306.2</b>	CTAF <b>122.9 0</b>



CATEGORY	A	B	C	D
LPV DA	1444-1 250 (300-1)			
LNAV/VNAV DA	1598-1 1/8 404 (500-1 1/8)			
LNAV MDA	1580-1 386 (400-1)	1580-1 1/8 386 (400-1 1/8)		
CIRCLING	1700-1 506 (600-1)	1800-1 3/4 606 (700-1 3/4)	1960-2 1/2 766 (800-2 1/2)	

MIRL Rwy 12-30

REIL Rwy 12 and 30

NC-1, 07 AUG 2025 to 04 SEP 2025

NC-1, 07 AUG 2025 to 04 SEP 2025