

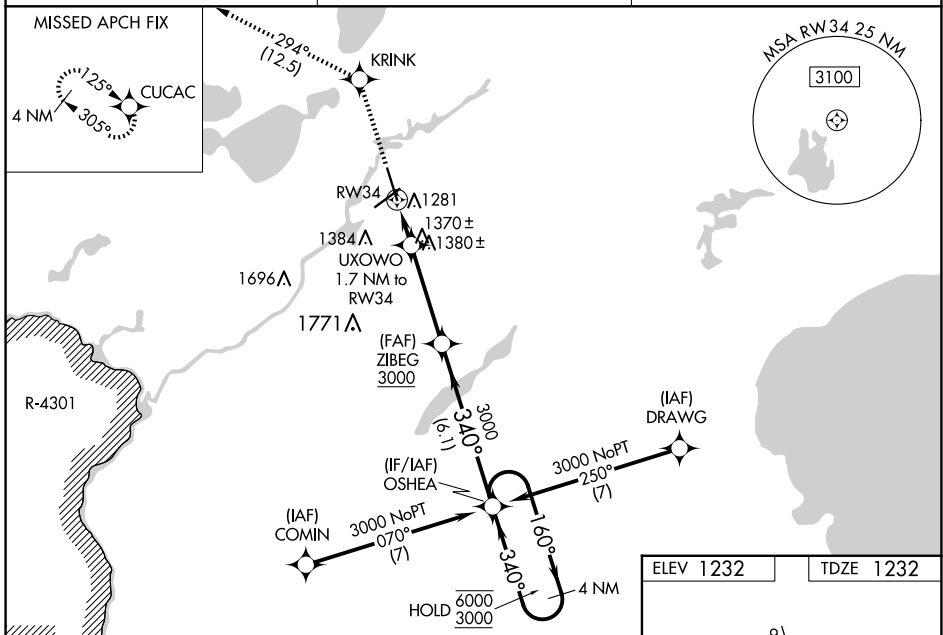
WAAS CH 70711 W34A	APP CRS 340°	Rwy Idg 7100
		TDZE 1232
		Apt Elev 1232

RNAV (GPS) RWY 34

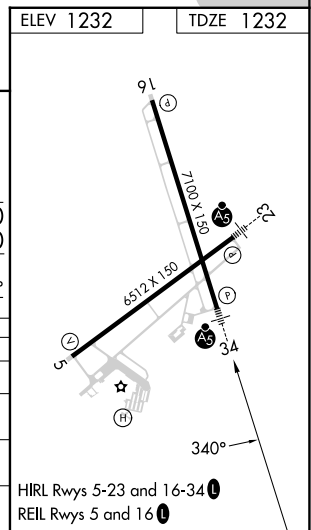
BRAINERD LAKES RGNL (BRD)

RNP APCH - GPS.		MALSR
<p>⚠ For uncompensated Baro-VNAV systems, LNAV/VNAV NA below -21°C or above 54°C. Baro-VNAV and VDP NA when using AIT altimeter setting. When local altimeter setting not received, use AIT altimeter setting and increase LPV DA to 1484 feet; increase LNAV/VNAV DA to 1578 feet and all visibilities 1/8 SM. Increase all MDAs 60 feet and LNAV visibility Cat C/D 1/4 SM. For inop ALS when using AIT altimeter setting, increase LNAV/VNAV all Cats visibility to 1 SM. For inop ALS increase LNAV/VNAV all Cats visibility to 7/8 SM.</p>		<p>MISSED APPROACH: Climb to 3300 direct KRINK and on 294° track to CUCAC and hold.</p>

ASOS 126.775	MINNEAPOLIS CENTER 118.05 239.0	UNICOM 122.7 (CTAF)
------------------------	---	-------------------------------



3300	KRINK	tr 294°	CUCAC	ZIBEG	OSHEA	4 NM Holding Pattern
				3000		
				UXOWO 1.7 NM to RW34		
				1.1 NM to RW34		
				1820		
				3000		
				340°		
				3000		
				6000		
				3000		
				GP 3.00°		
				TCH 47		
				1.1 NM	0.6 NM	3.7 NM
				6.1 NM		
CATEGORY	A	B	C	D		
LPV DA		1432-1/2	200 (200-1/2)			
LNAV/VNAV DA		1526-1/2	294 (300-1/2)			
LNAV MDA	1620-1/2	388 (400-1/2)	1620-5/8	388 (400-5/8)		
CIRCLING	1760-1	528 (600-1)	1760-1 1/2	1840-2		
			528 (600-1 1/2)	608 (700-2)		



NC-1, 15 MAY 2025 to 12 JUN 2025

NC-1, 15 MAY 2025 to 12 JUN 2025