

VOR/DME IDJ 110.0 Chan 37	APP CRS 126°	Rwy Idg 7002 TDZE 1391 Apt Elev 1391
---	------------------------	---

VOR/DME RWY 13

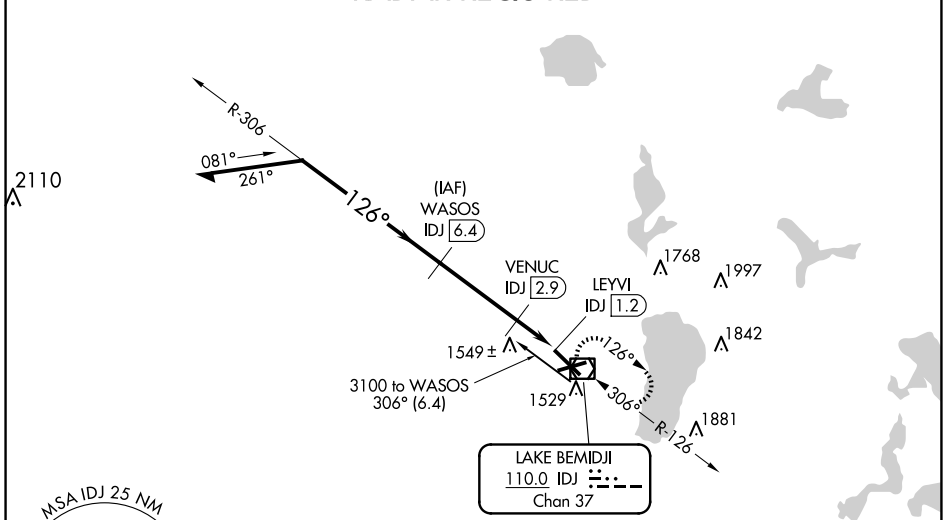
BEMIDJI RGNL (BJI)

NA When local altimeter setting not received, use Park Rapids altimeter setting and increase all MDA 100 feet, increase S-13 Cat C and D visibility 1/4 mile. VDP NA with Park Rapids altimeter setting. For inoperative MALSRL, increase S-13 Cat A and B visibility to 1 mile and Cat C and D visibility to 1 1/2 mile. For inoperative MALSRL when using Park Rapids altimeter setting, increase S-13 Cat A and B visibility to 1 mile and Cat C and D visibility to 1 3/8 mile. Helicopter visibility reduction below 3/4 SM not authorized.

MALSRL MISSED APPROACH: Climb to 3100 direct IDJ VOR/DME and hold, continue climb-in-hold to 3100.

AWOS-3 119.275	MINNEAPOLIS CENTER 134.75 251.1	UNICOM 122.8 (CTAF)
--------------------------	---	-------------------------------

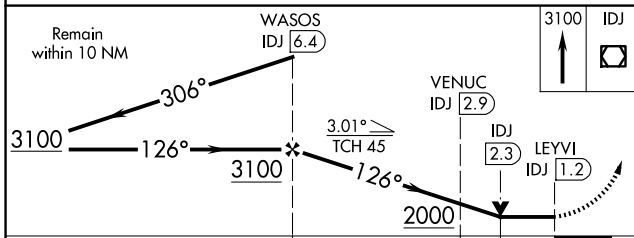
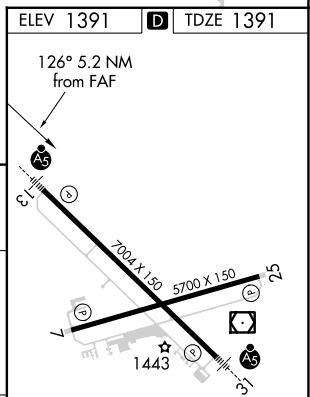
RADAR REQUIRED



NC-1, 15 MAY 2025 to 12 JUN 2025

NC-1, 15 MAY 2025 to 12 JUN 2025

ELEV 1391	D TDZE 1391
-----------	--------------------



CATEGORY	A	B	C	D
S-13	1800-3/4 409 (500-3/4)			
C CIRCLING	1840-1 449 (500-1)	1860-1 469 (500-1)	1860-1 1/2 469 (500-1 1/2)	1960-2 569 (600-2)

HIRL Rwy 13-31
MRL Rwy 7-25
REIL Rws 7 and 25