

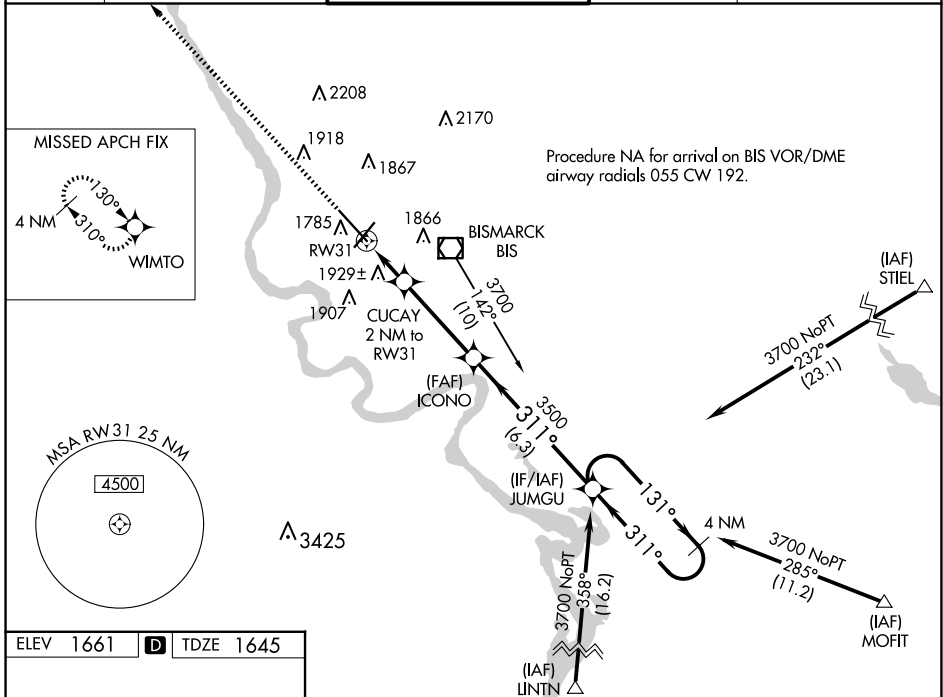
WAAS CH <b>56599</b> <b>W31A</b>	APP CRS <b>311°</b>	Rwy Idg TDZE Apt Elev	<b>8794</b> <b>1645</b> <b>1661</b>
--	------------------------	-----------------------------	---

# RNAV (GPS) RWY 31

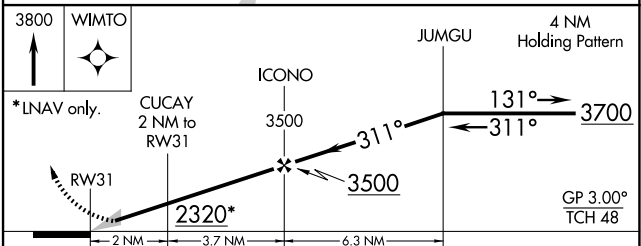
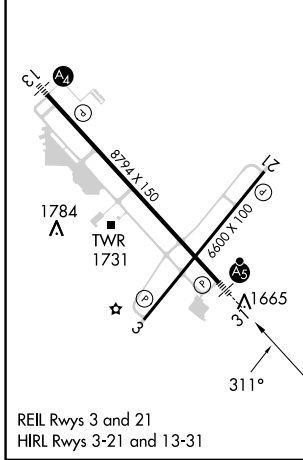
BISMARCK MUNI (BIS)

<p>For uncompensated Baro-VNAV systems, LNAV/VNAV NA below -18°C (0°F) or above 33°C (91°F). DME/DME RNP-0.3 NA. ** RVR 1800 authorized with use of FD or AP or HUD to DA.</p>	<p>MALS R</p>	<p>MISSED APPROACH: Climb to 3800 direct WIMTO and hold.</p>
	<p>Procedure NA for arrival on BIS VOR/DME airway radials 055 CW 192.</p>	

ATIS <b>119.35</b>	BISMARCK APP CON* <b>126.3 298.9</b>	BISMARCK TOWER* <b>118.3 (CTAF) 0 257.8</b>	GND CON <b>121.9</b>	UNICOM <b>122.95</b>
-----------------------	---	--	-------------------------	-------------------------



ELEV 1661	<b>D</b>	TDZE 1645
-----------	----------	-----------



CATEGORY	A	B	C	D
LPV DA	1845/24 200 (200-½)			
LNAV/VNAV DA	2269-1¾ 624 (700-1¾)			
LNAV MDA	2180/24	535 (600-½)	2180/55	535 (600-1)
<b>C</b> CIRCLING	2200-1	539 (600-1)	2460-2¼ 799 (800-2¼)	2460-2½ 799 (800-2½)

NC-1, 15 MAY 2025 to 12 JUN 2025

NC-1, 15 MAY 2025 to 12 JUN 2025