

LOC I-AUM 110.55	APP CRS 351°	Rwy Idg 5800
		TDZE 1231
		Apt Elev 1234

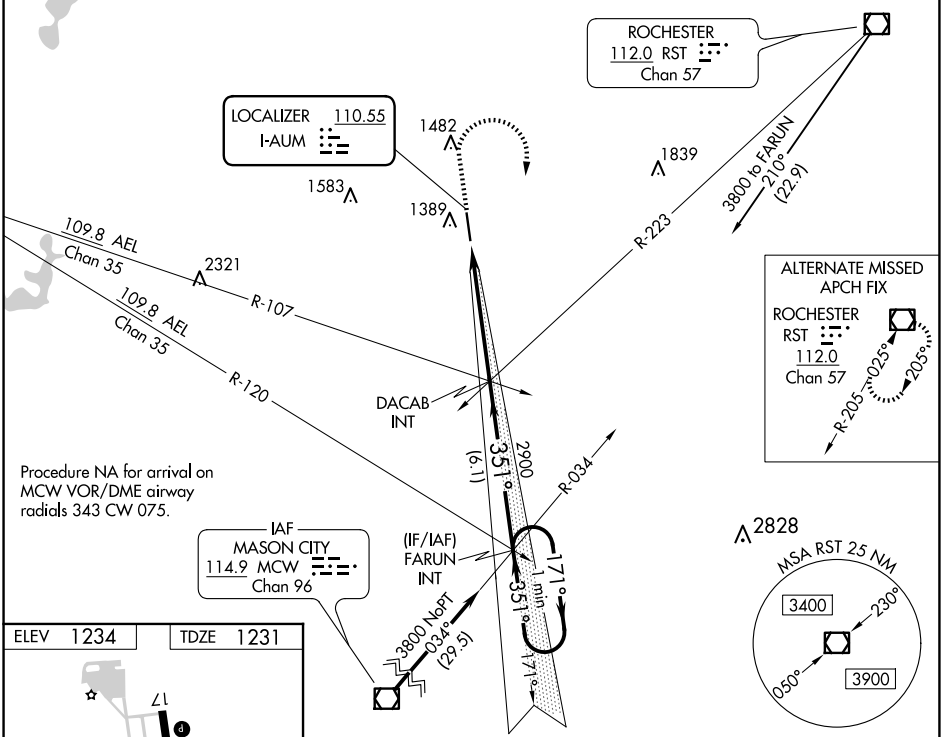
ILS or LOC RWY 35

AUSTIN MUNI (AUM)

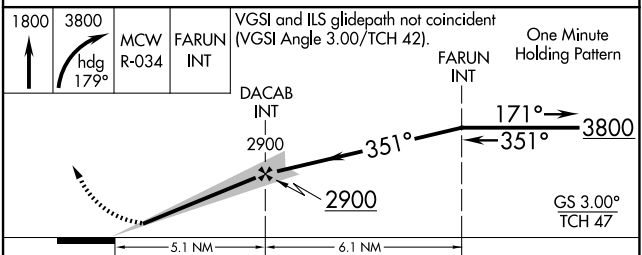
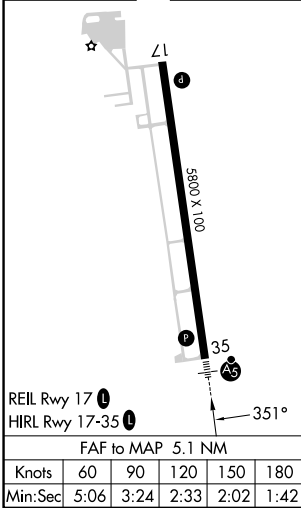
NA When local altimeter setting not received, use Albert Lea altimeter setting and increase all DA 48 feet and all MDA 60 feet; increase Circling Cat C/D visibility ¼ SM. For inoperative MALS/R, increase S-LOC 35 Cats C and D visibility to 1 ⅜ mile.

MALS/R MISSED APPROACH: Climb to 1800 then climbing right turn to 3800 on heading 179° and MCW VOR/DME R-034 to FARUN INT and hold.

AWOS-3 119.025	ROCHESTER APP CON* 119.8 251.125	UNICOM 122.7 (CTAF)
--------------------------	--	-------------------------------



ELEV 1234	TDZE 1231
-----------	-----------



CATEGORY	A	B	C	D
S-ILS 35	1431-½		200 (200-½)	
S-LOC 35	1700-½	469 (500-½)	1700-1	469 (500-1)
C CIRCLING	1740-1	506 (600-1)	1800-1½	1880-2 646 (700-2)

NC-1, 15 MAY 2025 to 12 JUN 2025

NC-1, 15 MAY 2025 to 12 JUN 2025