

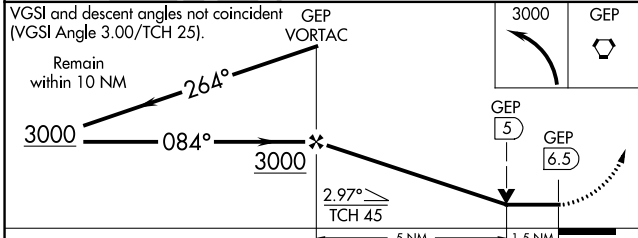
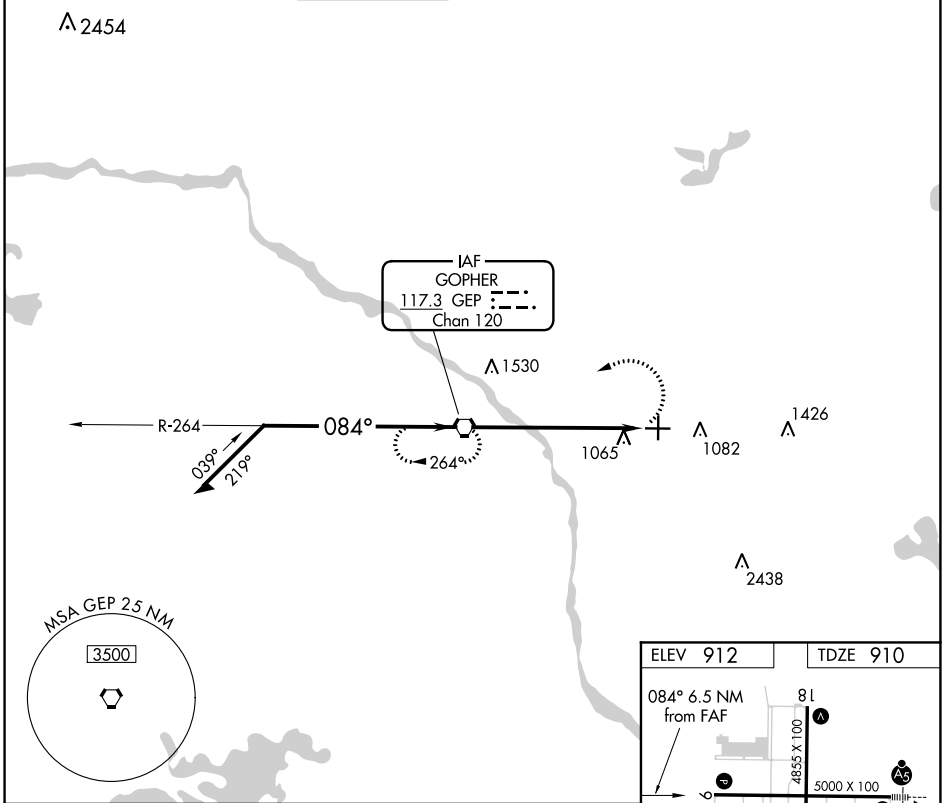
VORTAC GEP <b>117.3</b> Chan 120	APP CRS <b>084°</b>	Rwy Idg TDZE Apt Elev	<b>5000</b> <b>910</b> <b>912</b>
--	------------------------	-----------------------------	---

# VOR RWY 9

ANOKA COUNTY-BLAINE (JANES FLD) (A.N.E.)

MISSED APPROACH: Climbing left turn to 3000 direct GEP VORTAC and hold.

ATIS <b>120.625</b>	MINNEAPOLIS APP CON <b>126.5 335.65</b>	ANOKA TOWER* <b>132.4</b> (CTAF) <b>0</b>	GND CON <b>121.85</b>	CLNC DEL <b>121.3</b>	MINNEAPOLIS CLNC DEL <b>121.85</b> (When tower closed)	UNICOM <b>122.95</b>
------------------------	--	--	--------------------------	--------------------------	--	-------------------------



ELEV 912	TDZE 910
----------	----------

Detailed diagram of the runway area. Shows Runway 9 (5000 x 100), Runway 36 (5000 x 100), Runway 27, and Runway 81. Distances from FAF are 6.5 NM for Runway 9 and 8.1 NM for Runway 81. Other features include TW, 964, and HIRL/MIRL lights.

HIRL Rwy 9-27 **0**  
MIRL Rwy 18-36 **1**  
REIL Rwys 9, 18 and 36 **0**

FAF to MAP 6.5 NM					
Knots	60	90	120	150	180
Min:Sec	6:30	4:20	3:15	2:36	2:10

CATEGORY	A	B	C	D
S-9	1400-1 490 (500-1)		1400-1 $\frac{3}{8}$ 490 (500-1 $\frac{3}{8}$ )	1400-1 $\frac{1}{2}$ 490 (500-1 $\frac{1}{2}$ )
<b>C</b> CIRCLING	1400-1 488 (500-1)		1460-1 $\frac{1}{2}$ 548 (600-1 $\frac{1}{2}$ )	1580-2 668 (700-2)

NC-1, 14 JUL 2022 to 11 AUG 2022

NC-1, 14 JUL 2022 to 11 AUG 2022