

WAAS CH 82431 W34A	APP CRS 344°	Rwy Idg TDZE Apt Elev	4000 1206 1206
--	------------------------	-----------------------------	---

RNAV (GPS) RWY 34

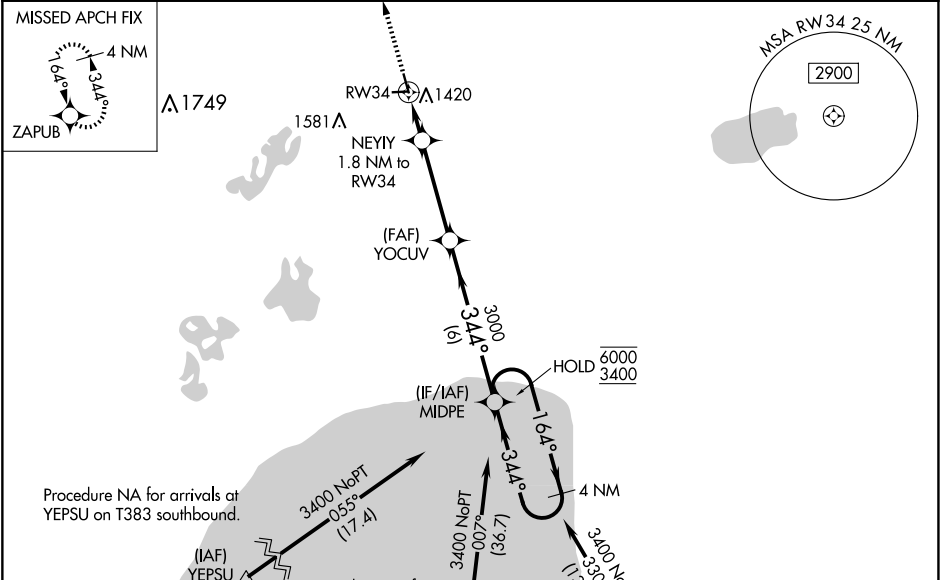
AITKIN MUNI/STEVE KURTZ FLD (AIT)

RNP APCH - GPS.

⚠ Circling NA to Rwy 8 and 26. Rwy 34 helicopter visibility reduction below ¼ SM NA. Baro-VNAV NA when using HZX altimeter setting. For uncompensated Baro-VNAV systems, LNAV/VNAV NA below -17°C or above 54°C. When local altimeter setting not received, use HZX altimeter setting: increase LPV DA to 1588 feet and all visibilities ½ SM; increase LNAV/VNAV DA to 1660 feet and all visibilities ¼ SM; increase all MDAs 40 feet and LNAV visibility Cat C ¼ SM.

MISSED APPROACH: Climb to 3400 direct ZAPUB and hold.

AWOS-3 118.675	MINNEAPOLIS CENTER 118.05 239.0	UNICOM 123.05 (CTAF) 0
--------------------------	---	----------------------------------

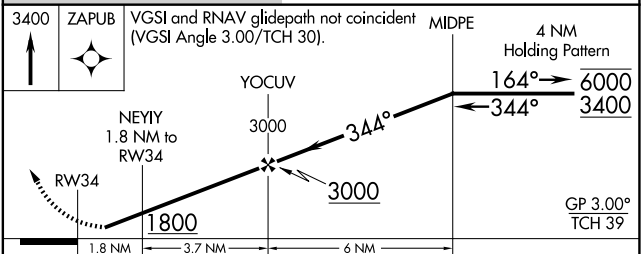
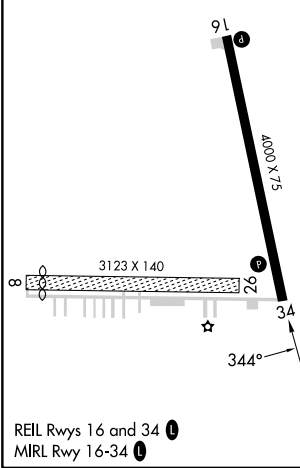


ELEV 1206	D	TDZE 1206
-----------	----------	-----------

Procedure NA for arrivals at YEPSU on T383 southbound.

Procedure NA for arrivals at GOLLF on T383 southbound.

Procedure NA for arrivals at LINDR on V218 southbound.



CATEGORY	A	B	C	D
LPV DA	1548-1½	342 (400-1½)		NA
LNAV/VNAV DA	1620-1¾	414 (500-1½)		NA
LNAV MDA	1720-1	514 (600-1)	1720-1¾ 514 (600-1½)	NA
C CIRCLING	1780-1	574 (600-1)	1900-2 694 (700-2)	NA

NC-1, 07 AUG 2025 to 04 SEP 2025

NC-1, 07 AUG 2025 to 04 SEP 2025