

# AGUDE FOUR ARRIVAL

AL-263 (FAA)

MINNEAPOLIS-ST PAUL, MINNESOTA

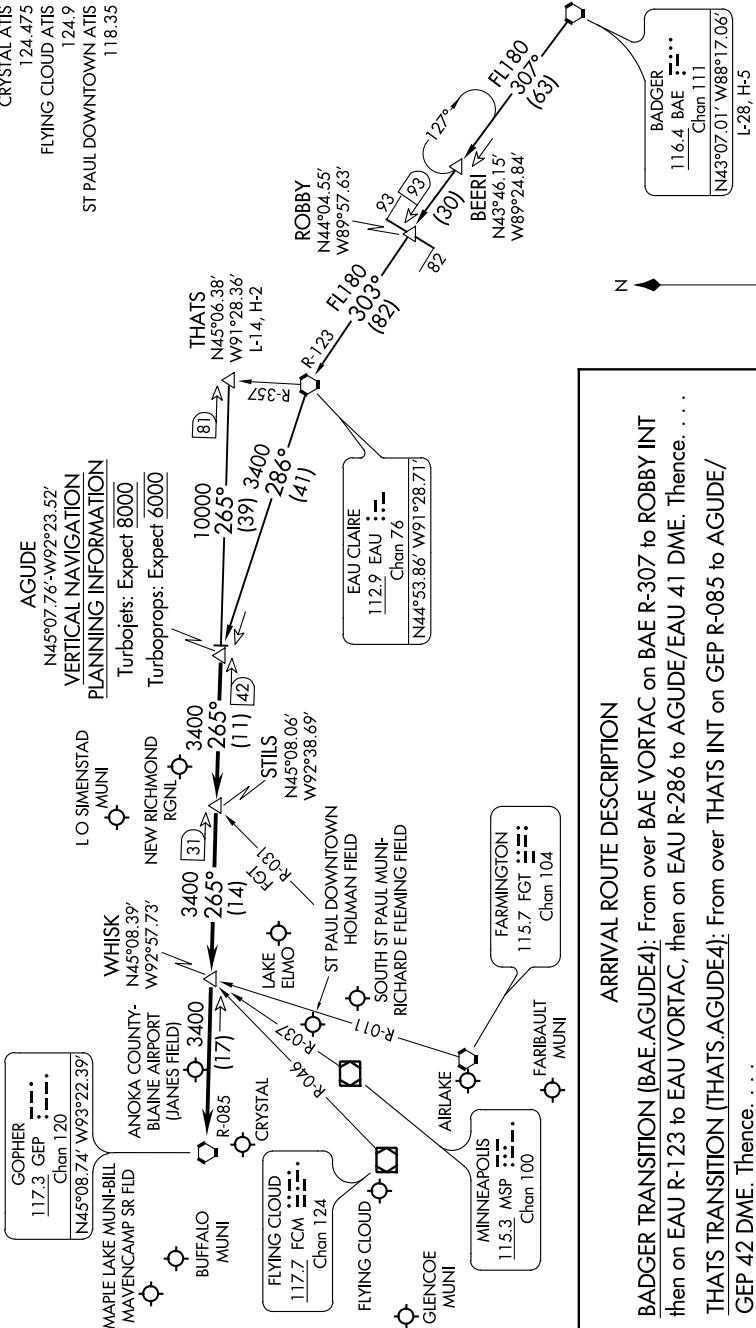
NC-1, 17 AUG 2017 to 14 SEP 2017

NOTE: Chart not to scale.

NOTE: DME and RADAR required.

MINNEAPOLIS APP CON  
121.2 335.5  
ANOKA COUNTY ATIS  
120.625  
CRYSTAL ATIS  
124.475  
FLYING CLOUD ATIS  
124.9  
ST PAUL DOWNTOWN ATIS  
118.35

**AGUDE**  
N45°07.76'-W92°23.52'  
**VERTICAL NAVIGATION**  
**PLANNING INFORMATION**  
Turbolojets: Expect 8000  
Turboprops: Expect 6000



## ARRIVAL ROUTE DESCRIPTION

**BADGER TRANSITION (BAE.AGUDE4):** From over BAE VORTAC on BAE R-307 to ROBBERY INT then on EAU R-123 to EAU VORTAC, then on EAU R-286 to AGUDE/EAU 41 DME. Thence. . . .

**THATS TRANSITION (THATS.AGUDE4):** From over THATS INT on GEP R-085 to AGUDE/ GEP 42 DME. Thence. . . .

. . . . From over AGUDE/GEP 42 DME via GEP R-085 to GEP VORTAC, then expect RADAR vectors to final approach course.

NC-1, 17 AUG 2017 to 14 SEP 2017