

AGUDE FIVE ARRIVAL

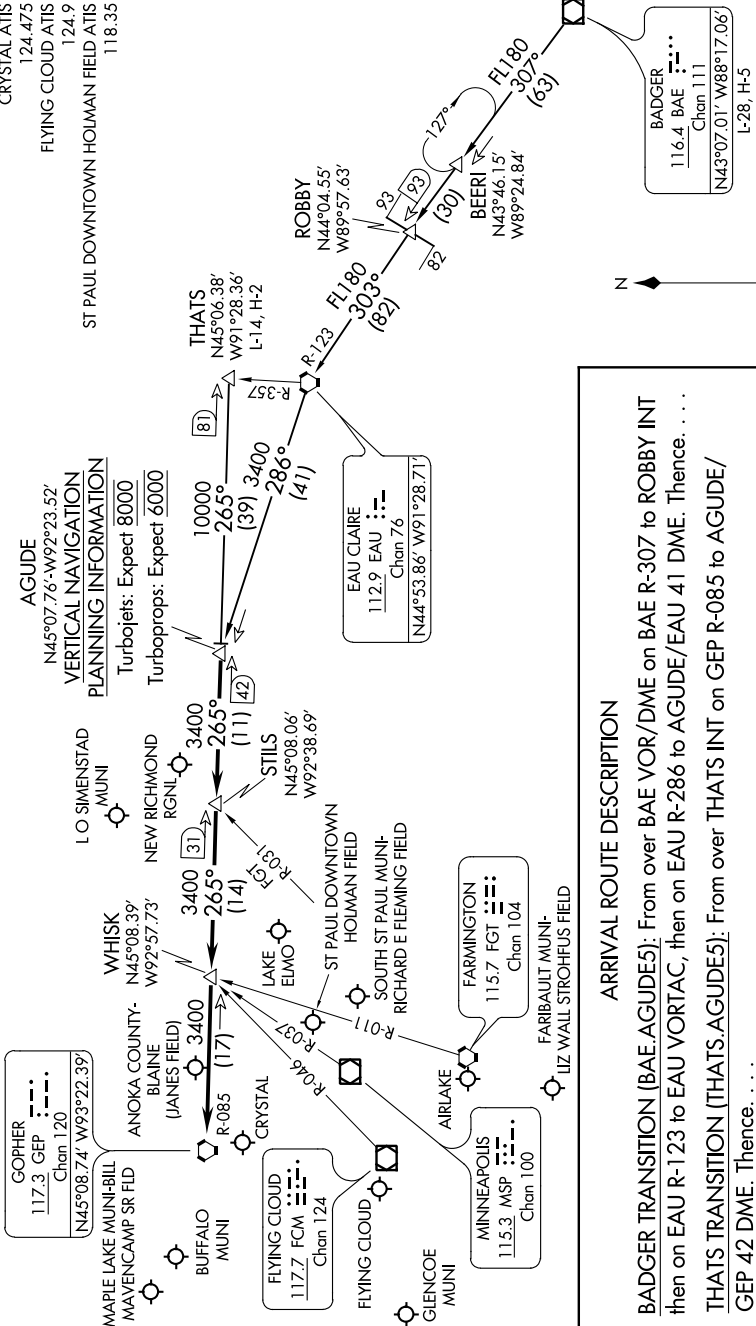
NC-1, 09 NOV 2017 to 07 DEC 2017

NOTE: Chart not to scale.

NOTE: DME and RADAR required.

MINNEAPOLIS APP CON
121.2 335.5
ANOKA COUNTY BLAINE (JANES FIELD) ATIS
120.625
CRYSTAL ATIS
124.475
FLYING CLOUD ATIS
124.9
ST PAUL DOWNTOWN HOLMAN FIELD ATIS
118.35

AGUDE
N45°07.76'-W92°23.52'
VERTICAL NAVIGATION
PLANNING INFORMATION
Turbolojets: Expect 8000
Turboprops: Expect 6000



ARRIVAL ROUTE DESCRIPTION

BADGER TRANSITION (BAE.AGUDE5): From over BAE VOR/DME on BAE R-307 to ROBBY INT then on EAU R-123 to EAU VORTAC, then on EAU R-286 to AGUDE/EAU 41 DME. Thence. . . .

THATS TRANSITION (THATS.AGUDE5): From over THATS INT on GEP R-085 to AGUDE/ GEP 42 DME. Thence. . . .

. . . . From over AGUDE/GEP 42 DME via GEP R-085 to GEP VORTAC, then expect RADAR vectors to final approach course.

NC-1, 09 NOV 2017 to 07 DEC 2017