

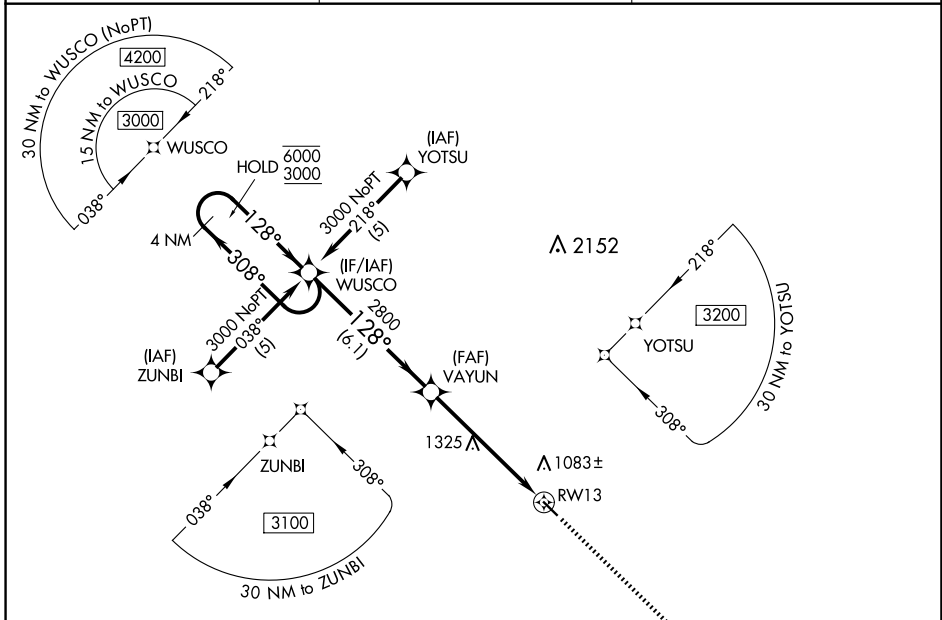
APP CRS	Rwy Idg	3901
128°	TDZE	933
	Apt Elev	933

RNAV (GPS) RWY 13

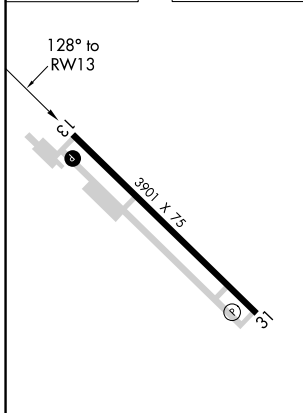
CASSELTON ROBERT MILLER RGNL (5N8)

RNP APCH.	MISSED APPROACH: Climb to 3000 direct JINPU and hold.
<p>▼ Rwy 13 helicopter visibility reduction below 3/4 SM NA. Use Fargo altimeter setting; when not received use Morehead altimeter setting and increase all MDA 20 feet.</p> <p>▲ NA</p>	

FAR ASOS 124.5 379.2	FARGO APP CON 120.4 377.15	UNICOM 122.8 (CTAF) 1
--------------------------------	--------------------------------------	---------------------------------



ELEV 933	TDZE 933
----------	----------



REIL Rwy 31 1	MIRL Rwy 13-31 1
---------------	------------------

4 NM Holding Pattern				WUSCO		VGS1 and descent angles not coincident (VGS1 Angle 3.00/TCH 21).		3000	JINPU
6000 ← 308°				→ 128°		128°		↑	✧
3000				VAYUN		3.05° TCH 40			
				6.1 NM		5.7 NM		RWY 13	
CATEGORY	A	B	C	D					
LNAV MDA	1620-1	687 (700-1)	1620-2	687 (700-2)	NA				

NC-1, 07 AUG 2025 to 04 SEP 2025

NC-1, 07 AUG 2025 to 04 SEP 2025