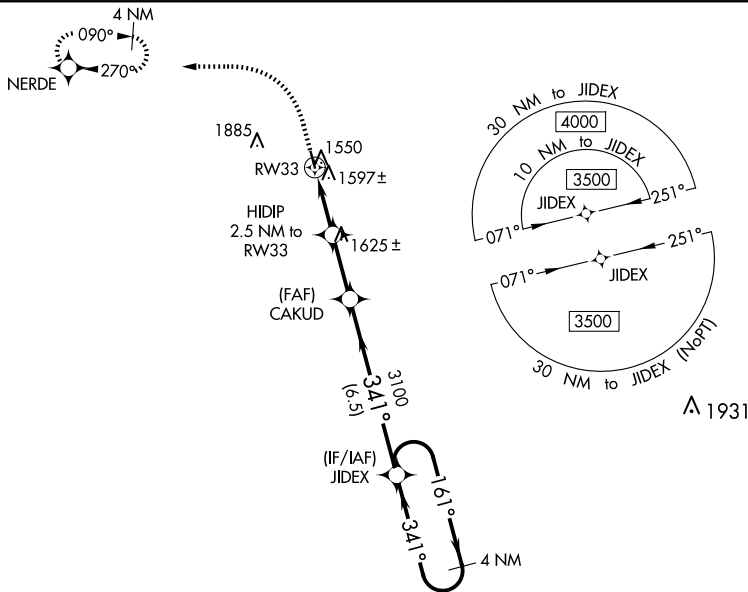


WAAS CH 53540 W33A	APP CRS 341°	Rwy ldg 3500 TDZE 1511 Apt Elev 1511
--	------------------------	---

RNAV (GPS) RWY 33

LAKOTA MUNI (5L \emptyset)

RNP APCH - GPS.		MISSED APPROACH: Climb to 2300 then climbing left turn to 3300 direct NERDE and hold.
<p>▼ Baro-VNAV NA. Rwy 33 helicopter visibility reduction below $\frac{3}{4}$ SM NA. ▲ NA Circling Rwy 15 NA at night. Use Devils Lake altimeter setting.</p>		
DVL AWOS-3PT 125.875	MINNEAPOLIS CENTER 132.15 269.6	UNICOM 122.8 (CTAF) \emptyset



ELEV 1511	TDZE 1511	R-5403		
2300	3300	NERDE	VGSI and RNAV glidepath not coincident (VGSI Angle 3.00/TCH 26).	
			<p>4 NM Holding Pattern</p> <p>3500</p> <p>GP 3.00°</p> <p>TCH 40</p>	
<p>HIDIP 2.5 NM to RW33</p> <p>CAKUD 3100</p> <p>JIDEX 3100</p> <p>2340</p> <p>2.5 NM 2.4 NM 6.5 NM</p>		<p>341°</p> <p>341°</p>		
CATEGORY	A	B	C	D
LPV DA	1827-1 $\frac{1}{8}$ 316 (400-1 $\frac{1}{8}$)			NA
LNAV/VNAV DA	1827-1 $\frac{1}{8}$ 316 (400-1 $\frac{1}{8}$)			NA
LNAV MDA	1920-1	409 (500-1)	1920-1 $\frac{1}{8}$ 409 (500-1 $\frac{1}{8}$)	NA
C CIRCLING	2080-1 569 (600-1)	2200-1 689 (700-1)	2320-2 $\frac{1}{4}$ 809 (900-2 $\frac{1}{4}$)	NA

NC-1, 15 MAY 2025 to 12 JUN 2025

NC-1, 15 MAY 2025 to 12 JUN 2025