

WAAS CH <b>86937</b> <b>W18A</b>	APP CRS <b>183°</b>	Rwy Idg TDZE Apt Elev	<b>5999</b> <b>654</b> <b>654</b>
--	------------------------	-----------------------------	---

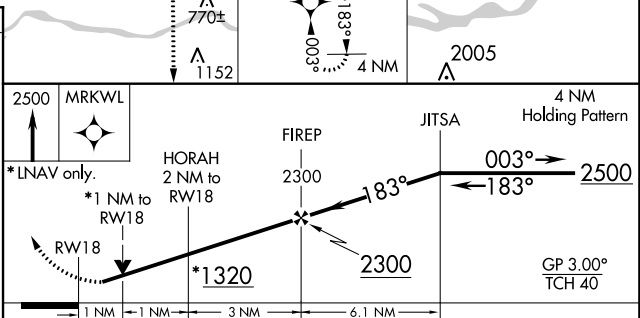
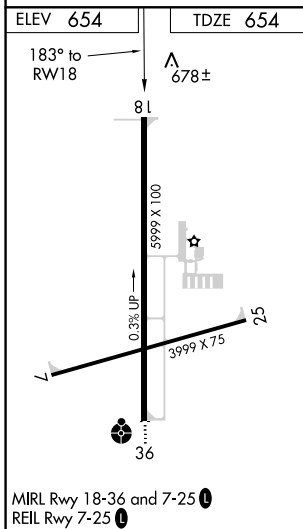
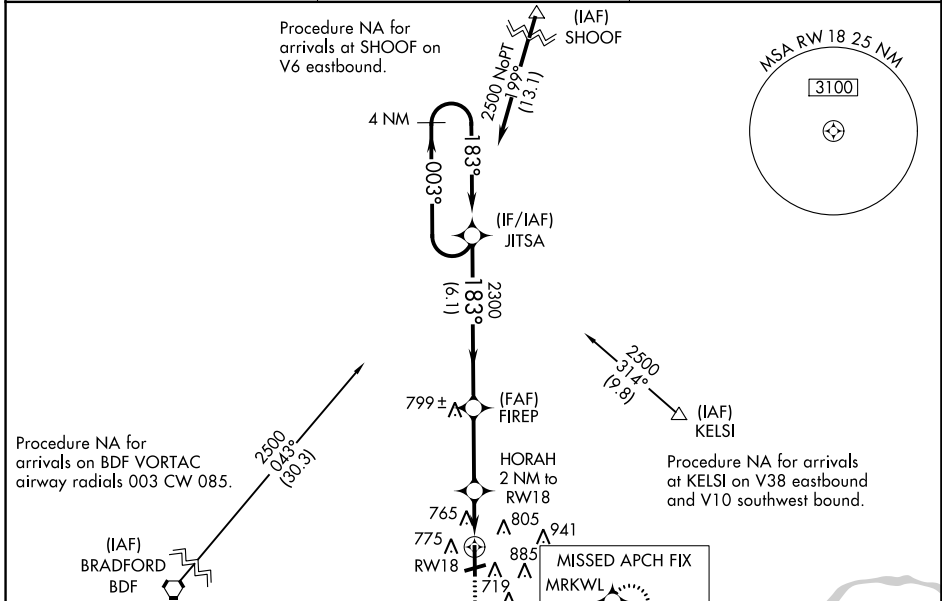
# RNAV (GPS) RWY 18

ILLINOIS VALLEY RGNL-WALTER A. DUNCAN FIELD (VYS)

**⚠** DME/DME RNP-0.3 NA. When local altimeter setting not received, use Marshall County altimeter setting and increase all DA 62 feet and all MDA 80 feet, increase LNAV Cats C/D visibility to 1 $\frac{1}{8}$ , Circling Cat C visibility to 2 and Circling Cat D visibility to 3. VDP and Baro-VNAV NA with Marshall County altimeter setting. Helicopter visibility reduction below  $\frac{3}{4}$  SM NA.

MISSED APPROACH: Climb to 2500 direct MRKWL and hold.

AWOS-3 <b>120.025</b>	CHICAGO CENTER <b>123.75 259.1</b>	UNICOM <b>123.0 (CTAF) 0</b>
--------------------------	---------------------------------------	---------------------------------



CATEGORY	A	B	C	D
LPV DA		904-1	250 (300-1)	
LNAV/VNAV DA		926-1	272 (300-1)	
LNAV MDA		1020-1	366 (400-1)	
CIRCLING	1120-1 466 (500-1)	1240-1 586 (600-1)	1260-1 $\frac{3}{4}$ 606 (700-1 $\frac{3}{4}$ )	1460-2 $\frac{1}{2}$ 806 (900-2 $\frac{1}{2}$ )