

LOC I-PYU <b>110.35</b>	APP CRS <b>003°</b>	Rwy Idg <b>5999</b>
	TDZE <b>650</b>	
	Apt Elev <b>654</b>	

# LOC RWY 36

ILLINOIS VALLEY RGNL-WALTER A. DUNCAN FIELD (VYS)

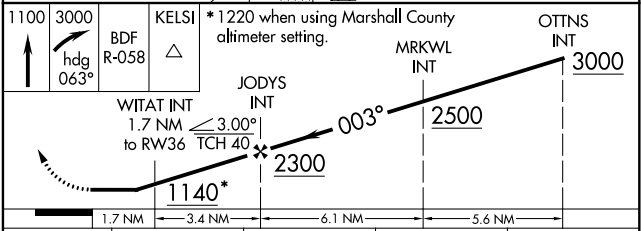
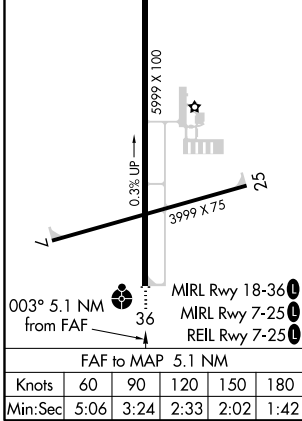
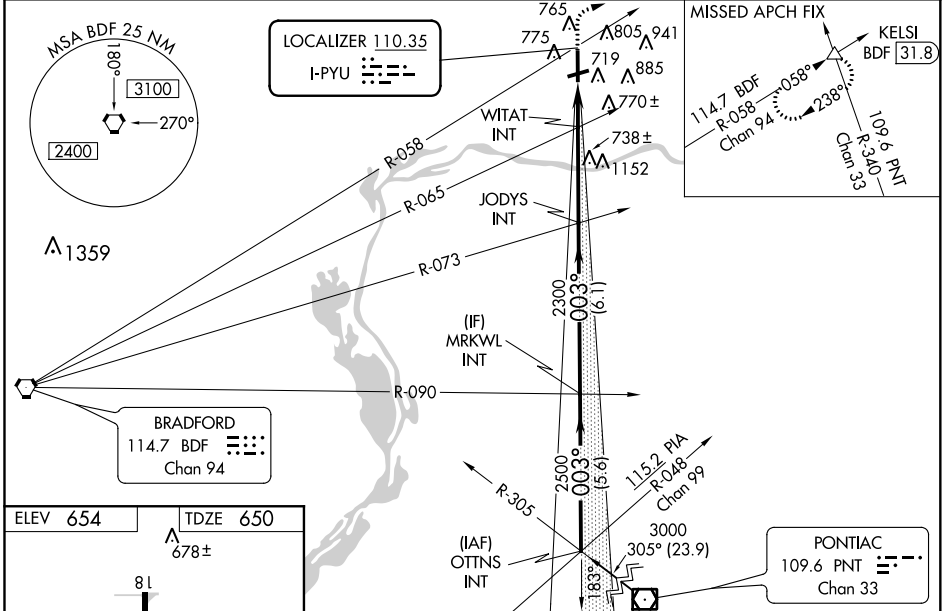
**NA** When local altimeter setting not received, use Marshall County altimeter setting and increase all MDA 80 feet; increase S-36 Cats C and D visibility 1 1/2 miles, increase Circling Cat C visibility to 2 miles and Circling Cat D visibility to 3 miles. WITAT fix minimums: increase S-36 Cats C and D visibility to 1 1/2 miles, increase Circling Cat C visibility to 2 miles and Cat D visibility to 3 miles. Inop table does not apply to Cats A and B. For inop ODALS, increase Cats C and D visibility to 1 1/2 miles. WITAT fix minimums: Inop table does not apply. For inop ODALS when using Marshall County altimeter setting, inop table does not apply to Cats A and B. For inop ODALS, increase Cats C and D visibility to 1 1/2 miles. WITAT fix minimums: inop table does not apply to Cats A and B, increase Cats C and D visibility to 1 1/2 miles.

**ODALS**  
MISSED APPROACH: Climb to 1100 then climbing right turn to 3000 on heading 063° and on BDF VORTAC R-058 to KELSI INT/BDF 31.8 DME and hold.

AWOS-3  
**120.025**

CHICAGO CENTER  
**123.75 259.1**

UNICOM  
**123.0 (CTAF)**



CATEGORY	A	B	C	D
S-36	1140-1	490 (500-1)	1140-1 1/4	490 (500-1 1/4)
<b>CIRCLING</b>	1140-1 486 (500-1)	1240-1 586 (600-1)	1260-1 3/4 606 (700-1 3/4)	1460-2 1/2 806 (900-2 1/2)
WITAT FIX MINIMUMS				
S-36	1000-1 350 (400-1)			
<b>CIRCLING</b>	1120-1 466 (500-1)	1240-1 586 (600-1)	1260-1 3/4 606 (700-1 3/4)	1460-2 1/2 806 (900-2 1/2)

PERU, ILLINOIS  
Amdt 4 15OCT15

ILLINOIS VALLEY RGNL-WALTER A. DUNCAN FIELD (VYS)  
41°21'N-89°09'W

# LOC RWY 36

EC-3, 01 MAR 2018 to 29 MAR 2018

EC-3, 01 MAR 2018 to 29 MAR 2018