

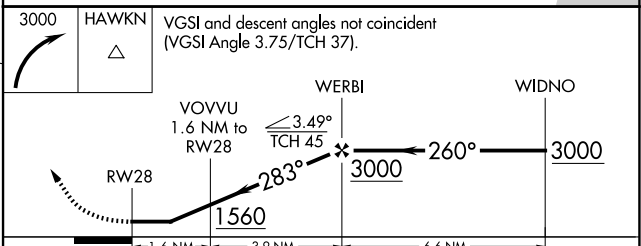
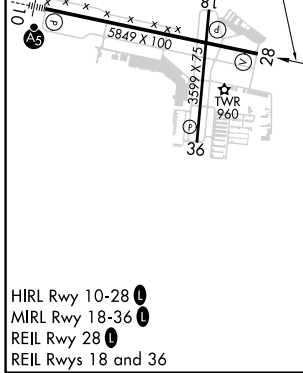
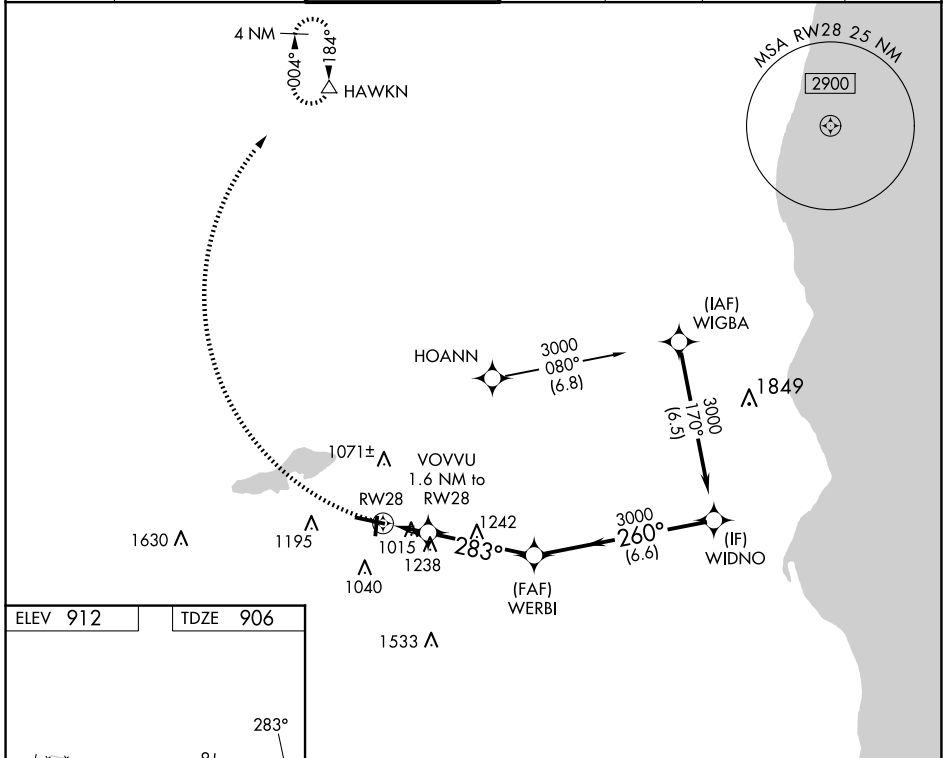
APP CRS	Rwy Ldg	5849
283°	TDZE	906
	Apt Elev	912

RNAV (GPS) RWY 28

WAUKESHA COUNTY (U/ES)

RNP APCH - GPS.		MISSED APPROACH: Climbing right turn to 3000 direct HAWKN and hold.			
<p>⚠ Rwy 28 helicopter visibility reduction below 1 SM NA. When local altimeter setting not received, use MWC altimeter setting and increase all MDAs 60 feet and LNAV visibility Cats C and D ½ SM, and Circling visibility Cats C and D ¼ SM.</p>					

ATIS 118.875	MILWAUKEE APP CON 125.35 307.0	WAUKESHA TOWER ★ 123.7 (CTAF) 0	GND CON 121.6	CLNC DEL 121.6	CLNC DEL 128.7 (When twr closed)	UNICOM 122.95
------------------------	--	---	-------------------------	--------------------------	---	-------------------------



CATEGORY	A	B	C	D
LNAV MDA	1500-1	594 (600-1)	1500-1¾	594 (600-1¾)
CIRCLING	1500-1	588 (600-1)	1540-1¾ 628 (700-1¾)	1640-2¼ 728 (800-2¼)

EC-3, 15 MAY 2025 to 12 JUN 2025

EC-3, 15 MAY 2025 to 12 JUN 2025