

TWOLF THREE ARRIVAL

AL-264 (FAA)

MINNEAPOLIS, MINNESOTA

MINNEAPOLIS APP CON
 126.95 335.5
 118.725 (MSP RWY 35)
 ANOKA COUNTY ATIS
 120.625
 CRYSTAL ATIS
 124.475
 FLYING CLOUD ATIS
 124.9
 MINNEAPOLIS D-ATIS ARR
 135.35 239.275
 ST PAUL DOWNTOWN ATIS
 118.35

GOPHER
 117.3 GEP
 Chan 120

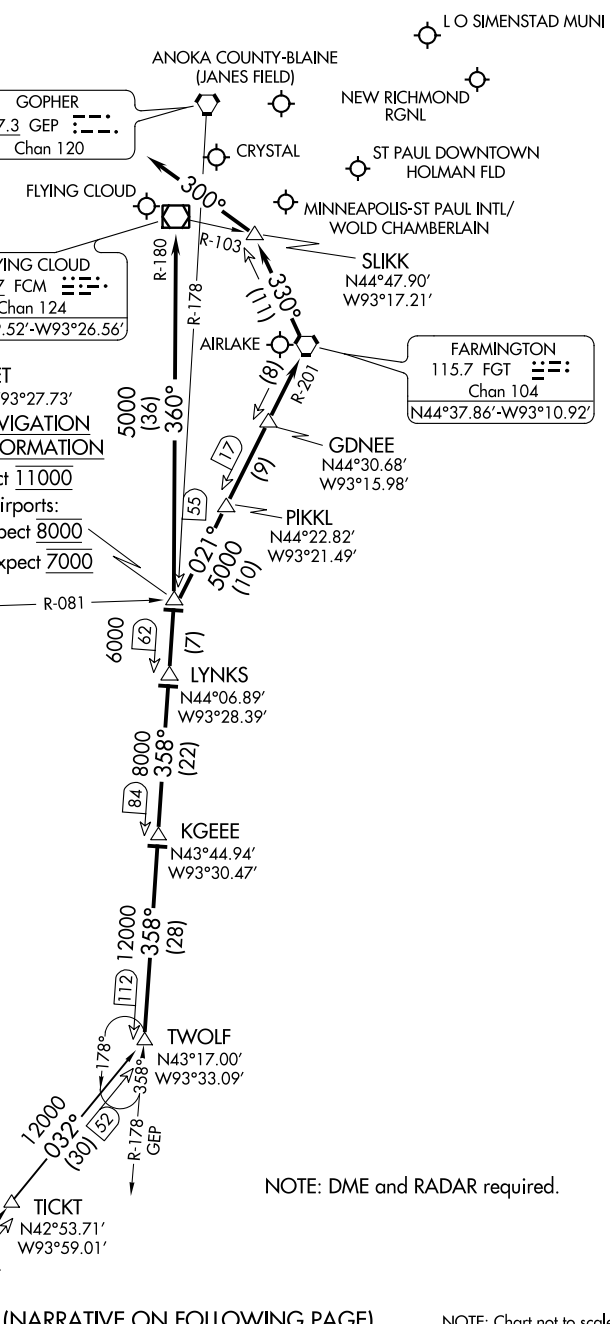
FLYING CLOUD
 117.7 FCM
 Chan 124
 N44°49.52'-W93°26.56'

TRGET
 N44°13.88'-W93°27.73'
VERTICAL NAVIGATION
PLANNING INFORMATION

MSP: Expect 11000
 All other airports:
 Turbojets: Expect 8000
 Turboprops: Expect 7000

MANKATO
 110.8 MKT
 Chan 45

FORT DODGE
 113.5 FOD
 Chan 82
 N42°36.67'-W94°17.69'
 L-12, H-5



(NARRATIVE ON FOLLOWING PAGE)

NOTE: Chart not to scale.

NC-1, 11 OCT 2018 to 08 NOV 2018

NC-1, 11 OCT 2018 to 08 NOV 2018

TWOLF THREE ARRIVAL

MINNEAPOLIS, MINNESOTA