

WAAS CH <b>57910</b> <b>W25A</b>	APP CRS <b>249°</b>	Rwy Idg TDZE <b>647</b> Apt Elev <b>648</b>	<b>6499</b>
--	------------------------	---	-------------

# RNAV (GPS) RWY 25

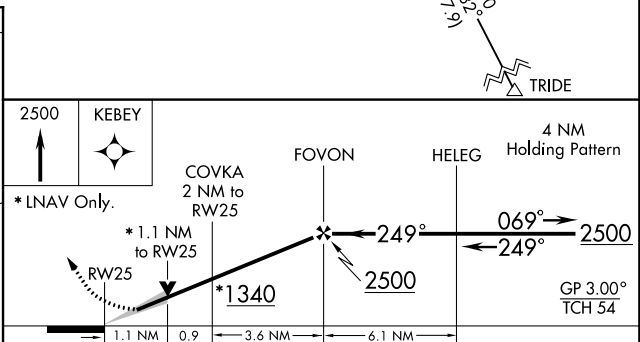
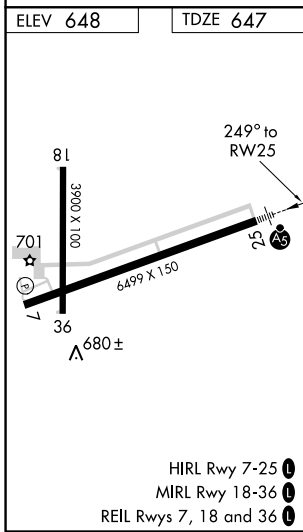
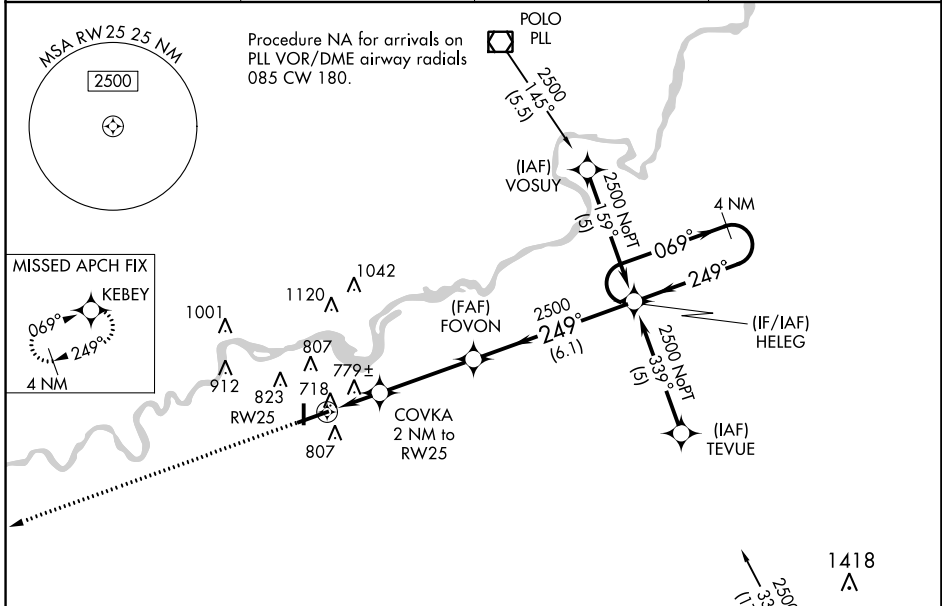
WHITESIDE COUNTY AIRPORT-JOSEPH H. BITTORF FIELD (SQI)

When local altimeter setting not received, use Clinton altimeter setting and increase all DA and MDA 80 feet and increase LNAV/VNAV visibility all Cats. 1/4 mile. For uncompensated Baro-VNAV systems, LNAV/VNAV NA below -16°C (4°F) or above 47°C (116°F). DME/DME RNP-0.3 NA. VDP and Baro-VNAV NA when using Clinton altimeter setting. For inoperative MALSR, increase LNAV Cat. D visibility to 1/4 mile.



MISSED APPROACH: Climb to 2500 direct KEBEY and hold.

AWOS-3PT <b>119.175</b>	ROCKFORD APP CON <b>126.0 327.0</b>	CLNC DEL <b>128.0</b>	UNICOM <b>123.0 (CTAF) 0</b>
----------------------------	--	--------------------------	---------------------------------



CATEGORY	A	B	C	D
LPV DA	897-1/2 250 (300-1/2)			
LNAV/VNAV DA	1084-1 437 (500-1)			
LNAV MDA	1060-1/2 413 (500-1/2)	1060-3/4 413 (500-3/4)	1060-1 413 (500-1)	1060-1 413 (500-1)
CIRCLING	1140-1 492 (500-1)	1140-1/2 492 (500-1/2)	1200-2 552 (600-2)	1200-2 552 (600-2)

EC-3, 12 OCT 2017 to 09 NOV 2017

EC-3, 12 OCT 2017 to 09 NOV 2017