

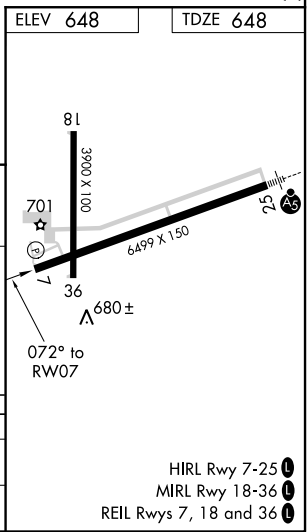
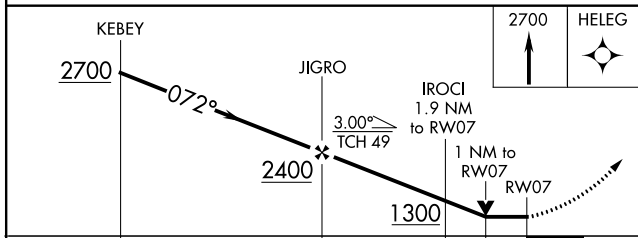
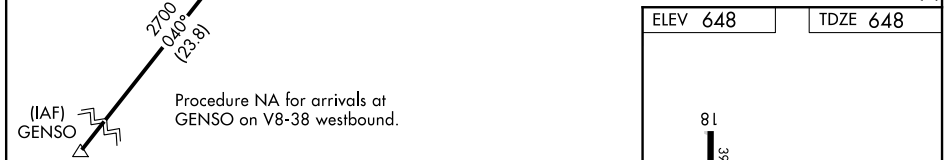
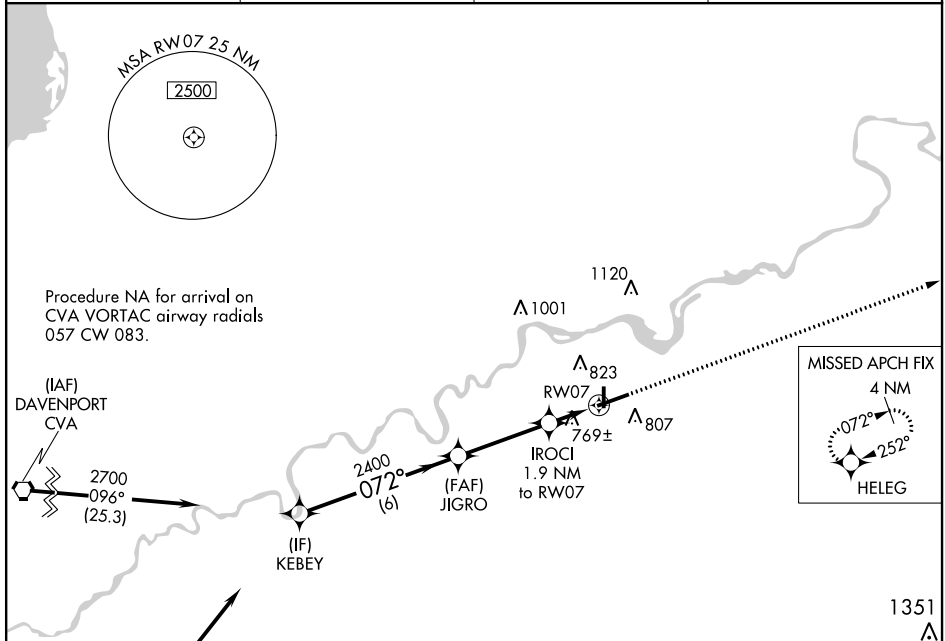
APP CRS	Rwy Idg	6499
072°	TDZE	648
	Apt Elev	648

RNAV (GPS) RWY 7

WHITESIDE COUNTY AIRPORT-JOSEPH H. BITTORF FIELD (SQI)

<p>⚠ Circling Rwy 36 NA at night. Rwy 7 helicopter visibility reduction below 3/4 SM NA. DME/DME RNP-0.3 NA.</p>	<p>MISSED APPROACH: Climb to 2700 direct HELEG and hold.</p>
---	--

AWOS-3PT 119.175	ROCKFORD APP CON 126.0 327.0	CLNC DEL 128.0	UNICOM 123.0 (CTAF) 0
----------------------------	--	--------------------------	---------------------------------



CATEGORY	A	B	C	D
LNAV MDA	1020-1 372 (400-1)			
C CIRCLING	1140-1 492 (500-1)	1160-1½ 512 (600-1½)	1480-2¾ 832 (900-2¾)	

EC-3, 19 JUL 2018 to 16 AUG 2018

EC-3, 19 JUL 2018 to 16 AUG 2018