

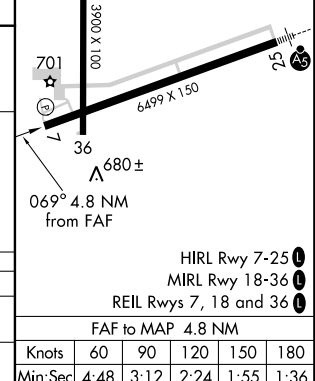
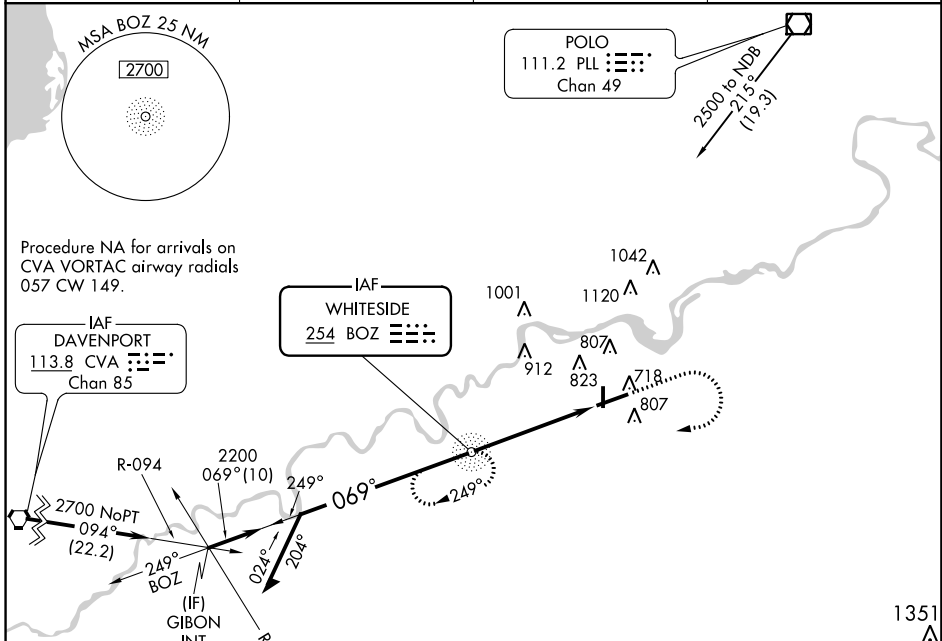
NDB BOZ 254	APP CRS 069°	Rwy Idg 6499
		TDZE 648
		Apt Elev 648

NDB RWY 7

WHITESIDE COUNTY AIRPORT-JOSEPH H. BITTORF FIELD (SQI)

<p>⚠ When local altimeter setting not received, use Clinton altimeter setting and increase all MDA 80 feet.</p> <p>⚠ Visibility reduction by helicopters NA.</p>	<p>MISSED APPROACH: Climb to 1500 then climbing right turn to 2200 direct BOZ NDB and hold.</p>
--	--

AWOS-3PT 119.175	ROCKFORD APP CON 126.0 327.0	CLNC DEL 128.0	UNICOM 123.0 (CTAF) 0
----------------------------	--	--------------------------	---------------------------------



CATEGORY	A	B	C	D
S-7	1160-1 512 (600-1)		1160-1½ 512 (600-1½)	1160-1¾ 512 (600-1¾)
CIRCLING	1160-1 512 (600-1)		1160-1½ 512 (600-1½)	1200-2 552 (600-2)

EC-3, 12 OCT 2017 to 09 NOV 2017

EC-3, 12 OCT 2017 to 09 NOV 2017