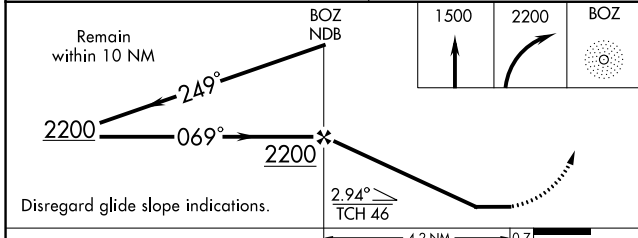
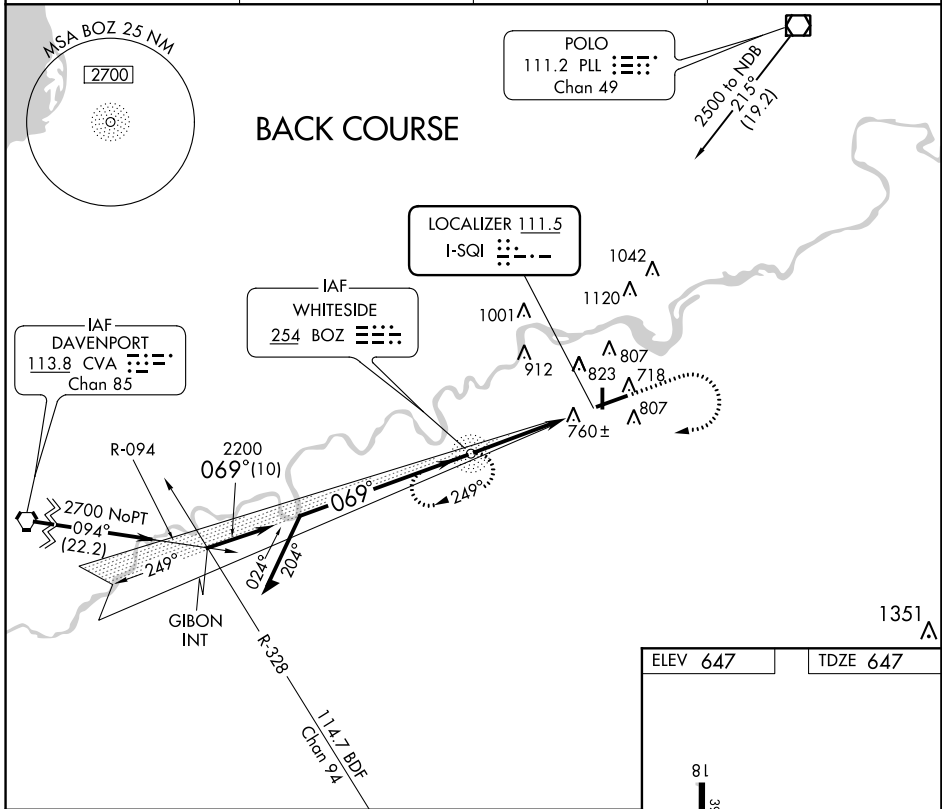


LOC I-SQI <b>111.5</b>	APP CRS <b>069°</b>	Rwy Idg TDZE Apt Elev	<b>6499</b> <b>647</b> <b>647</b>
---------------------------	------------------------	-----------------------------	---

# LOC BC RWY 7

WHITESIDE COUNTY AIRPORT-JOSEPH H. BITTORF FIELD (SQI)

ADF required.		MISSED APPROACH: Climb to 1500 then climbing right turn to 2200 direct BOZ NDB and hold.	
AWOS-3PT <b>119.175</b>	ROCKFORD APP CON <b>126.0 327.0</b>	CLNC DEL <b>128.0</b>	UNICOM <b>123.0 (CTAF)</b>



ELEV 647	TDZE 647
----------	----------

MIRL Rwy 18-36

HIRL Rwy 7-25

REIL Rwys 7, 18 and 36

FAF to MAP 4.2 NM

Knots	60	90	120	150	180
Min:Sec	4:12	2:48	2:06	1:41	1:24

EC-3, 22 JUN 2017 to 20 JUL 2017

EC-3, 22 JUN 2017 to 20 JUL 2017