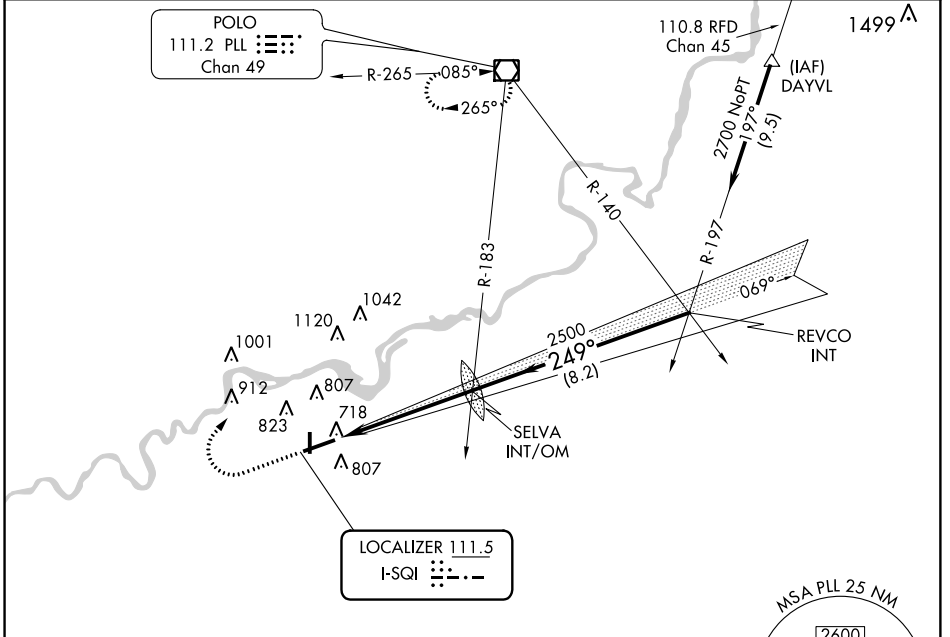


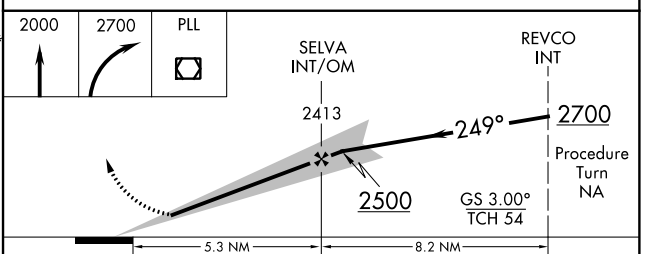
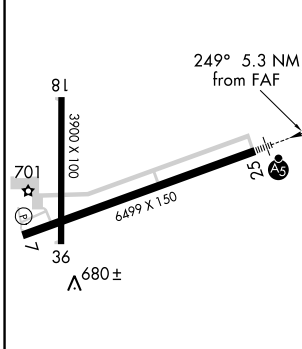
LOC I-SQI 111.5	APP CRS 249°	Rwy Idg TDZE Apt Elev	6499 647 647
---------------------------	------------------------	-----------------------------	---

WHITESIDE COUNTY AIRPORT-JOSEPH H. BITTORF FIELD (SQI) **ILS RWY 25**

NA	MALS R	MISSED APPROACH: Climb to 2000 then climbing right turn to 2700 direct PLL VOR/DME and hold.	
AWOS-3PT 119.175	ROCKFORD APP CON 126.0 327.0	CLNC DEL 128.0	UNICOM 123.0 (CTAF)



ELEV 647	TDZE 647
-----------------	-----------------



	HIRL Rwy 7-25				
	MIRL Rwy 18-36				
	REIL Rwys 7, 18 and 36				
FAF to MAP 5.3 NM					
Knots	60	90	120	150	180
Min:Sec	5:18	3:32	2:39	2:07	1:46
CATEGORY	A	B	C	D	
S-ILS 25	847-1/2 200 (200-1/2)				
S-LOC 25	1120-1/2	473 (500-1/2)	1120-3/4 473 (500-3/4)	1120-1 473 (500-1)	
CIRCLING	1140-1	493 (500-1)	1140-1 1/2 493 (500-1 1/2)	1200-2 553 (600-2)	

EC-3, 01 MAR 2018 to 29 MAR 2018

EC-3, 01 MAR 2018 to 29 MAR 2018