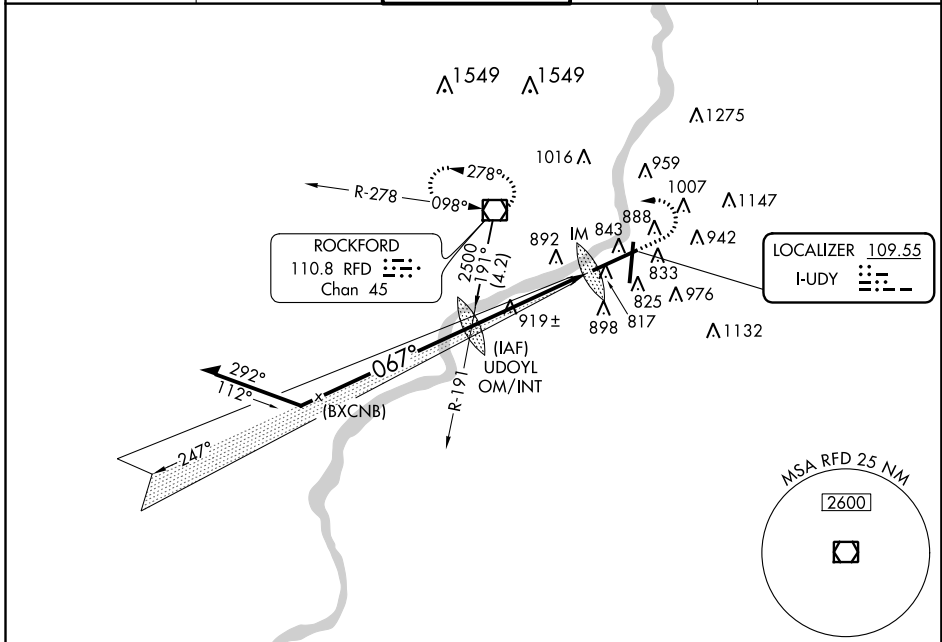


LOC I-UDY 109.55	APP CRS 067°	Rwy Idg 10002 TDZE 742 Apt Elev 742
----------------------------	------------------------	----------------------------------------------------------------

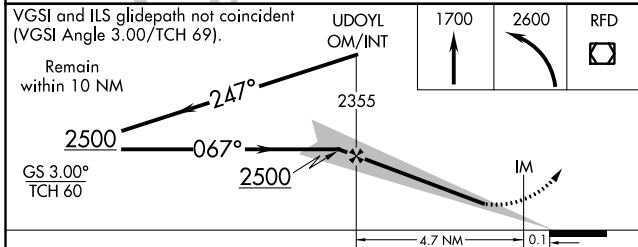
ILS or LOC RWY 7

CHICAGO/ROCKFORD INTL (RFD)

ASR	ALSIF-2	MISSED APPROACH: Climb to 1700 then climbing left turn to 2600 direct RFD VOR/DME and hold.		
ATIS 127.6	ROCKFORD APP CON 121.0 327.0	ROCKFORD TOWER 118.1 239.0	GND CON 121.9 239.0	CLNC DEL 119.25



VGSI and ILS glidepath not coincident (VGSI Angle 3.00/TCH 69).
 Remain within 10 NM
 GS 3.00° TCH 60



ELEV 742		TDZE 742				
REIL Rwy 19 and 25 HIRL Rwy 1-19 and 7-25 TDZ/CL Rwy 1 and 7 FAF to MAP 4.8 NM						
CATEGORY	A	B	C	D		
S-ILS 7	942/18		200 (200-½)			
S-LOC 7	1200/24		458 (500-½)			
CIRCLING	1220-1 478 (500-1)	1240-1 498 (500-1)	1240-1½ 498 (500-1½)	1320-2 578 (600-2)		
	Knots	60	90	120	150	180
	Min:Sec	4:48	3:12	2:24	1:55	1:36

EC-3, 09 NOV 2017 to 07 DEC 2017

EC-3, 09 NOV 2017 to 07 DEC 2017