


WAAS CH 77937 W10D	APP CRS 090°	Rwy Ldg TDZE Apt Elev	7500 680 680
--	------------------------	-----------------------------	---

RNAV (GPS) Y RWY 10R

CHICAGO O'HARE INTL (ORD)

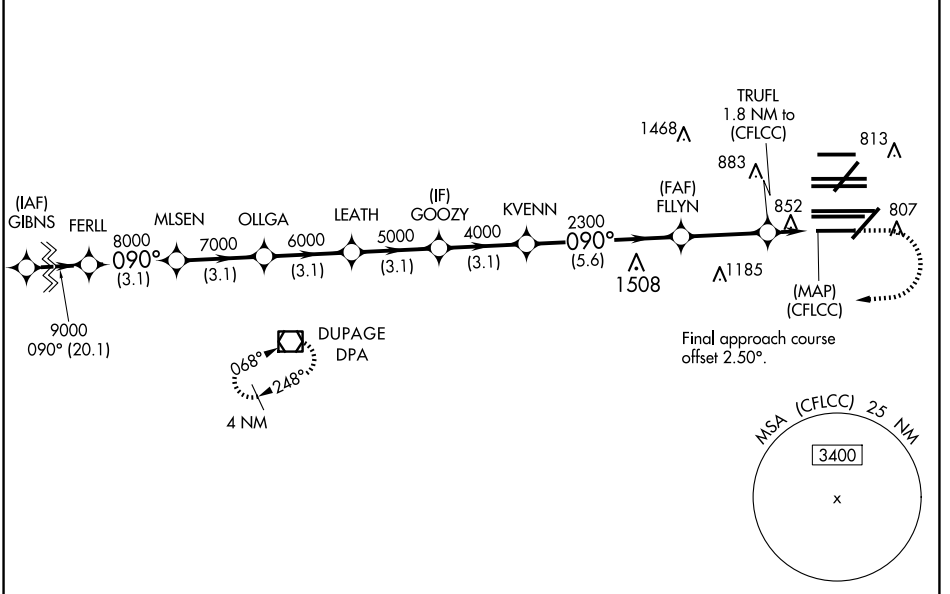
RNP APCH.




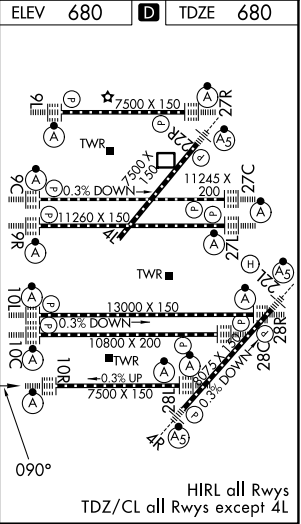
Simultaneous approach authorized. For uncompensated Baro-VNAV systems, LNAV/VNAV NA below -19°C or above 54°C.
 LNAV procedure NA during simultaneous operations.
 Use of FD or AP providing RNAV track guidance required during simultaneous operations.
 For inop ALS, increase LNAV/VNAV all Cats visibility to 1/2 SM.

ALSF-2


MISSED APPROACH:
 Climb to 1200 then climbing right turn to 4000 direct DPA
 VOR/DME and hold.

D-ATIS 135.4 282.225	CHICAGO APP CON 119.0 292.125	O'HARE TOWER 133.0 348.0	GND CON 124.125 (TWR NORTH) 118.05 (TWR SOUTH) 226.675 (ALL TWRs)	(TWR CENTER) 121.75 (OBND) 121.9 (IBND)	CLNC DEL 121.6	CPDLC
--	---	------------------------------------	---	---	--------------------------	-------



1200 4000 DPA   		ELEV 680	TDZE 680	
FERLL 9000 090° MLSEN 8000 OLLGA 7000 LEATH 6000 GOOZY 5000 KVENN 4000 FLYN 2300 TRUFL 1.8 NM to (CFLLC) *1.2 NM to (CFLLC)		*LNAV only. 		
CATEGORY	A	B	C	D
LPV DA	930/24		250 (300-1/2)	
LNAV/VNAV DA	1157/50		477 (500-1)	
LNAV MDA	1120/24	440 (500-1/2)	1120/40	440 (500-3/4)

EC-3, 07 AUG 2025 to 04 SEP 2025

EC-3, 07 AUG 2025 to 04 SEP 2025