

LOC/DME I-BYW <b>110.9</b> Chan 46	APP CRS <b>091°</b>	Rwy ldg TDZE Apt Elev	<b>7500</b> <b>680</b> <b>680</b>
--	------------------------	-----------------------------	---

# ILS Y or LOC Y RWY 10R

CHICAGO O'HARE INTL (ORD)

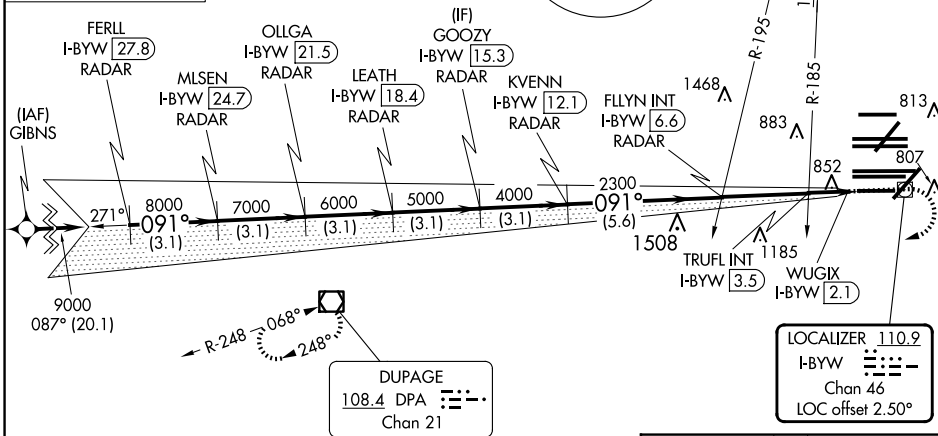
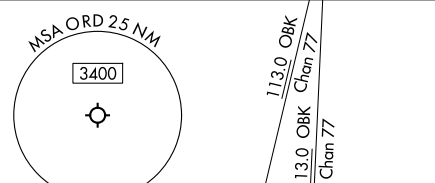
RNAV 1-GPS or RADAR required for procedure entry. DME or RADAR required.  
From GIBNS: RNAV-1 GPS required.

ALSF-2  
MISSED APPROACH: Climb to 1200 then climbing right turn to 4000 direct DPA VOR/DME and hold.

Simultaneous approach authorized.

D-ATIS <b>135.4</b> <b>282.225</b>	CHICAGO APP CON <b>119.0 292.125</b>	O'HARE TOWER <b>133.0 348.0</b>	GND CON (TWR CENTER) <b>124.125</b> (TWR NORTH) <b>118.05</b> (TWR SOUTH) <b>226.675</b> (ALL TWRS)	(TWR CENTER) <b>121.75</b> (OBND) <b>121.9</b> (IBND)	CLNC DEL <b>121.6</b>	CPDLC
--	---	------------------------------------	--	---	--------------------------	-------

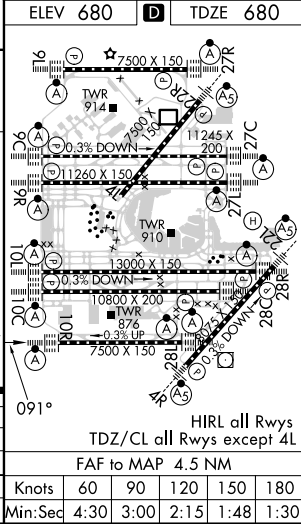
ALTERNATE MISSED APCH FIX  
JOLIET  
JOT  
112.3  
Chan 70  
R-246 066°



DUPAGE  
108.4 DPA  
Chan 21

LOCALIZER 110.9  
I-BYW  
Chan 46  
LOC offset 2.50°

FERLL I-BYW 27.8 RADAR	OLLGA I-BYW 21.5 RADAR	GOOZY I-BYW 15.3 RADAR	FLYIN INT I-BYW 6.6 RADAR	TRUFL INT I-BYW 3.5 RADAR	WUGIX I-BYW 2.1 RADAR
9000	8000	7000	6000	5000	4000
GS 3.00° TCH 55					
*LOC only					
1200 4000 DPA					
CATEGORY A B C D					
S-ILS 10R 930/24 250 (300-½)					
S-LOC 10R 1220/24 540 (600-½) 1220/55 540 (600-1)					
TRUFL FIX MINIMUMS (DUAL VOR RECEIVERS OR DME REQUIRED)					
S-LOC 10R 1120/24 440 (500-½) 1120/40 440 (500-¾)					



EC-3, 15 MAY 2025 to 12 JUN 2025

EC-3, 15 MAY 2025 to 12 JUN 2025