

LOC/DME I-VQX 110.75 Chan 44(Y)	APP CRS 274°	Rwy ldg TDZE Apt Elev	7500 667 680
----------------------------------------------	------------------------	-----------------------------	-----------------------------------------

ILS RWY 28L (CAT II & III)

CHICAGO O'HARE INTL (ORD)

From VOGLR: RNAV 1-GPS required.

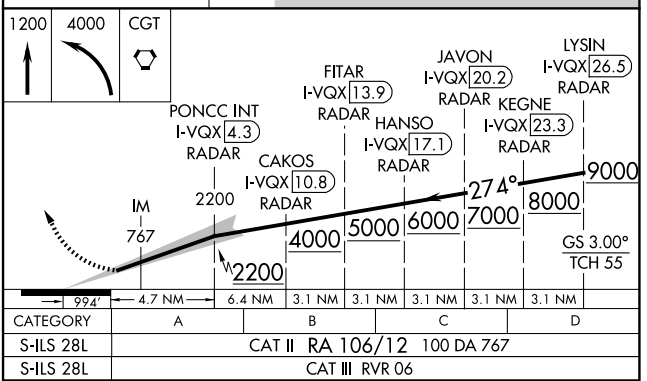
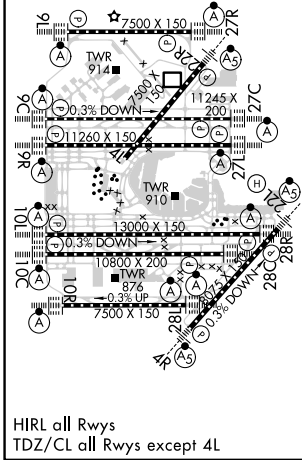
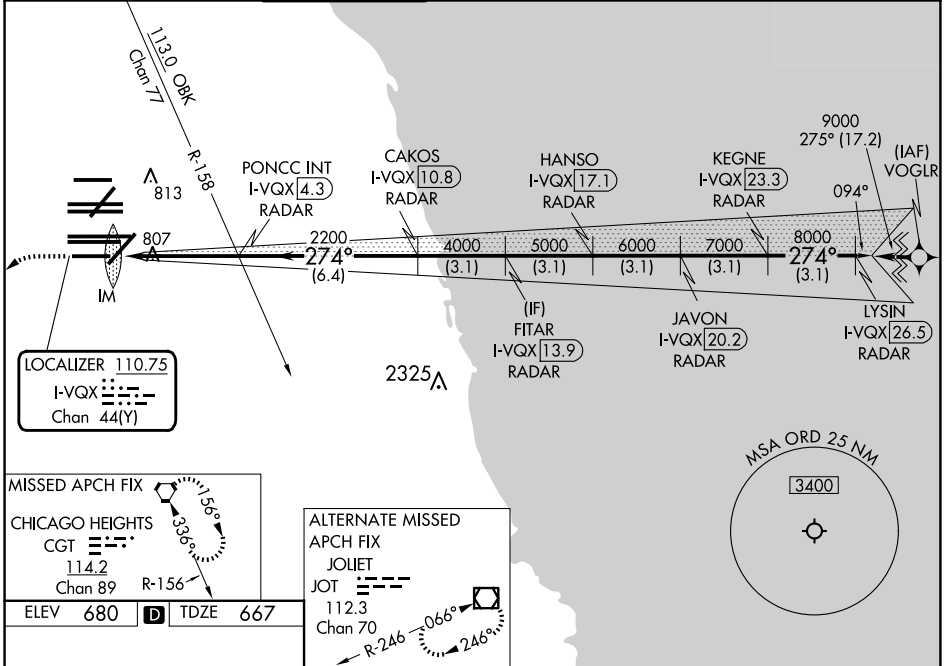
Aircraft not GPS equipped - RADAR required for procedure entry.
DME or RADAR required.

ALSF-2

MISSED APPROACH:
Climb to 1200 then climbing left turn to 4000 direct CGT VORTAC and hold.

Simultaneous approach authorized.
CAT II: RVR 1000 authorized with specific OPSPEC, MSPEC, or LOA approval and use of autoland or HUD to touchdown.

D-ATIS 135.4 282.225	CHICAGO APP CON 119.0 292.125	O'HARE TOWER 133.0 348.0	GND CON (TWR NORTH) 124.125 (TWR SOUTH) 118.05 (ALL TWRs) 226.675	(TWR CENTER) 121.75 (OBND) 121.9 (IBND)	CLNC DEL 121.6	CPDLC
------------------------------------------	-----------------------------------------	------------------------------------	-------------------------------------------------------------------------------------------------------	-------------------------------------------------------------	--------------------------	-------



CATEGORY II & III ILS - SPECIAL AIRCREW & AIRCRAFT CERTIFICATION REQUIRED

CATEGORY A | B | C | D

S-ILS 28L | CAT II RA 106/12 100 DA 767

S-ILS 28L | CAT III RVR 06

EC-3, 15 MAY 2025 to 12 JUN 2025

EC-3, 15 MAY 2025 to 12 JUN 2025