

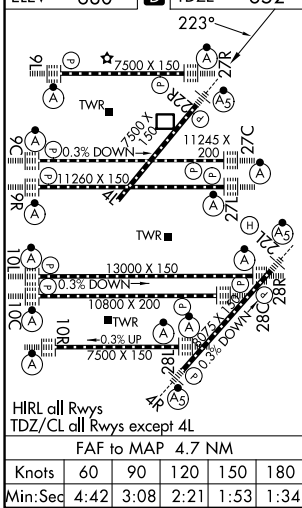
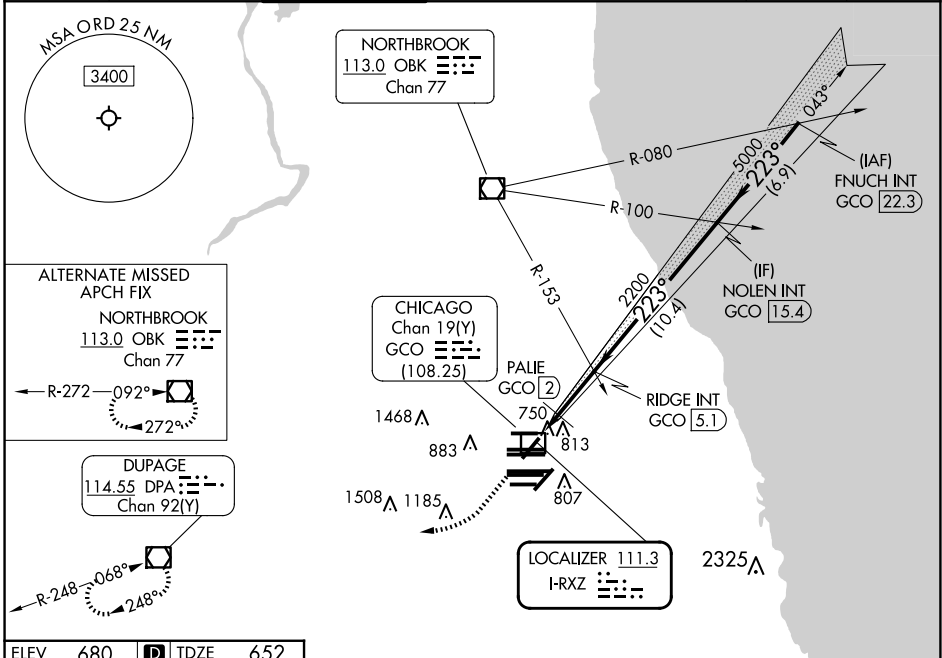
LOC I-RXZ <b>111.3</b>	APP CRS <b>223°</b>	Rwy Ldg TDZE <b>7300 652</b>	Apt Elev <b>680</b>
---------------------------	------------------------	---------------------------------	------------------------

# ILS or LOC RWY 22R

CHICAGO O'HARE INTL (ORD)

RADAR required for procedure entry.		MALSR	MISSED APPROACH: Climb to 1300 then climbing right turn to 4000 direct DPA VOR/DME and hold.	
Simultaneous approach authorized. DME from GCO DME.				

D-ATIS <b>135.4 282.225</b>	CHICAGO APP CON <b>119.0 292.125</b>	O'HARE TOWER <b>126.9 348.0</b>	GND CON (TWR NORTH) <b>124.125 118.05 226.675</b> (TWR SOUTH) (ALL TWRs)	(TWR CENTER) (OBND) <b>121.75</b> (IBND) <b>121.9</b>	CLNC DEL <b>121.6</b>	CPDLC
--------------------------------	---	------------------------------------	--	---	--------------------------	-------



1300	4000	DPA	VGSI and ILS glidepath not coincident (VGSI Angle 3.00/TCH 69).	
				FNUCH INT GCO (22.3)
		RIDGE INT GCO (5.1)	NOLEN INT GCO (15.4)	7000
		2200	5000	GS 3.00° TCH 49
		1220	2200	
		0.8 NM	0.8 NM	3.1 NM
		10.4 NM	6.9 NM	
CATEGORY	A	B	C	D
S-ILS 22R	852/18 200 (200-½)			
S-LOC 22R	1220/24	568 (600-½)	1220-1¼	568 (600-1¼)
<b>C</b> CIRCLING	1220-1	540 (600-1)	1220-1½	1460-2½
PALIE FIX MINIMUMS				
S-LOC 22R	980/24	328 (300-½)	980/26	328 (300-½)
<b>C</b> CIRCLING	1220-1	540 (600-1)	1220-1½	1460-2½
		540 (600-1½)	780 (800-2½)	

EC-3, 07 AUG 2025 to 04 SEP 2025

EC-3, 07 AUG 2025 to 04 SEP 2025