

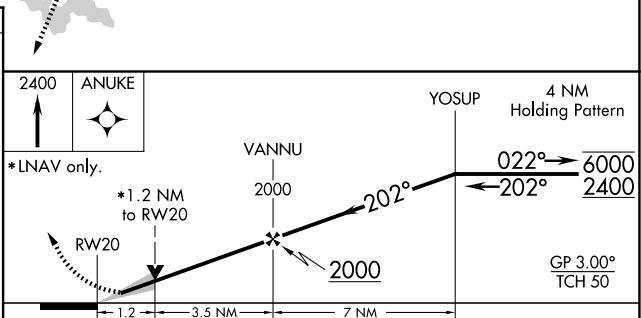
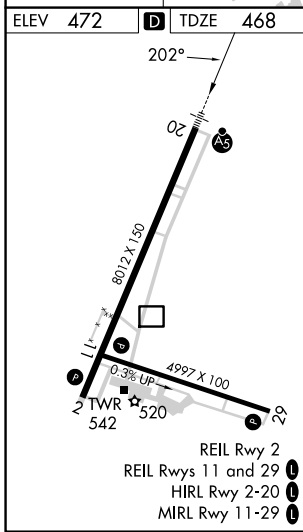
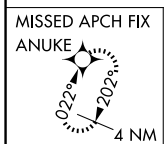
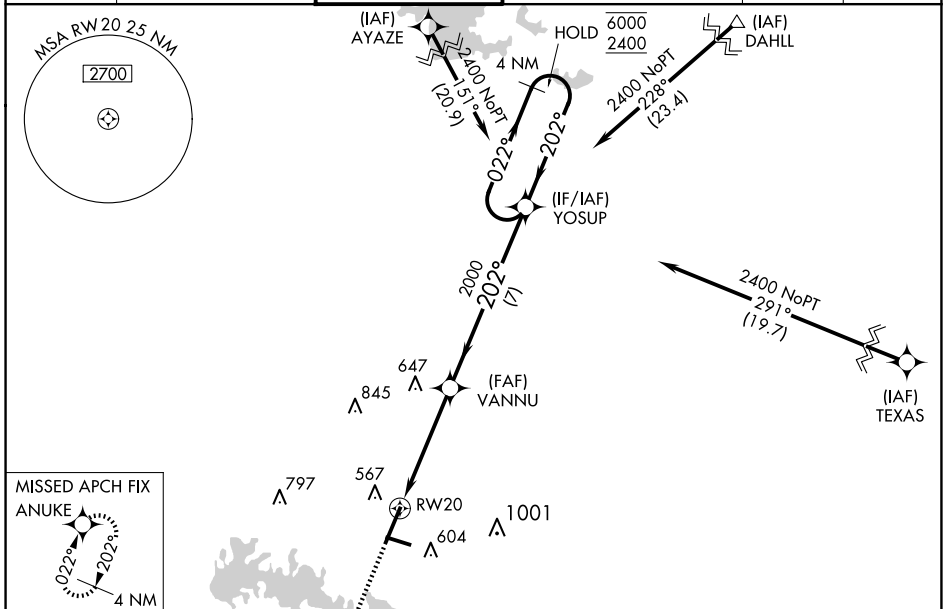
WAAS CH 57904 W20A	APP CRS 202°	Rwy Idg TDZE Apt Elev	8012 468 472
--	------------------------	-----------------------------	---

RNAV (GPS) RWY 20

VETERANS AIRPORT OF SOUTHERN ILLINOIS (MWA)

RNP APCH.	MALSR	MISSED APPROACH: Climb to 2400 direct ANUKE and hold.
<p>⚠ Circling Rwy 11 NA at night. For uncompensated Baro-VNAV systems, LNAV/VNAV NA below -15° C or above 54° C. For inop ALS, increase LNAV/VNAV all Cats visibility to 7/8 SM and LNAV Cats C/D visibility to 1 1/8 SM.</p>		

AWOS-3P 119.675	KANSAS CITY CENTER 127.475 346.275	MARION TOWER★ 128.4 (CTAF)	CLNC DEL 127.475 (When twr closed)	GND CON 121.7	UNICOM 122.95
---------------------------	--	--------------------------------------	--	-------------------------	-------------------------



CATEGORY	A	B	C	D
LPV DA		668-1/2	200 (200-1/2)	
LNAV/VNAV DA		773-1/2	305 (400-1/2)	
LNAV MDA	880-1/2	412 (500-1/2)	880-3/4	412 (500-3/4)
CIRCLING	920-1 448 (500-1)	940-1 468 (500-1)	1040-1 1/2 568 (600-1 1/2)	1340-2 3/4 868 (900-2 3/4)