

LOC I-MTW	APP CRS	Rwy Idg	<b>5001</b>
<b>111.3</b>	<b>172°</b>	TDZE	<b>651</b>
		Apt Elev	<b>651</b>

# ILS or LOC RWY 17

MANITOWOC COUNTY (MTW)

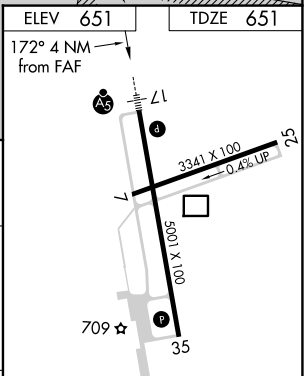
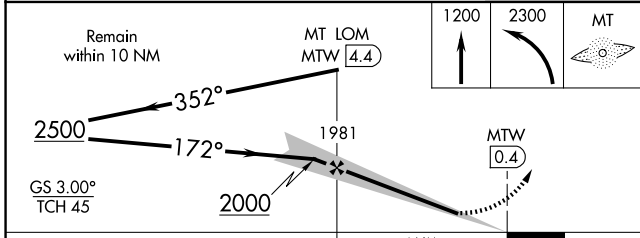
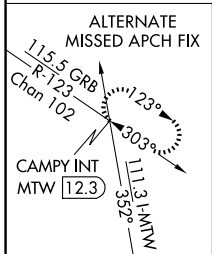
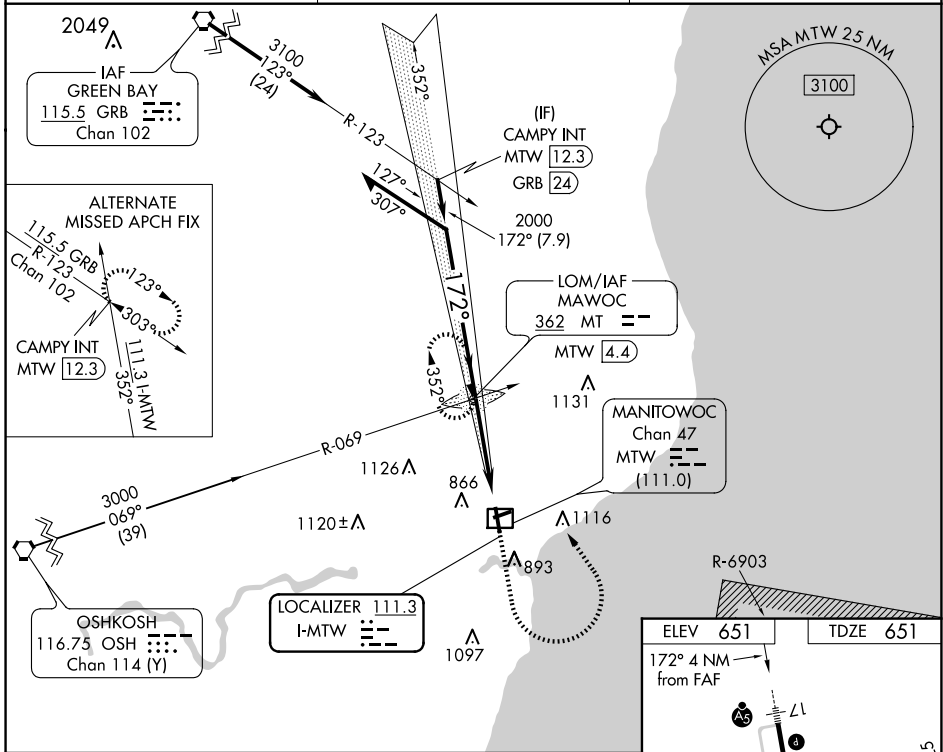
ADF required.

**MALSR**

MISSED APPROACH: Climb to 1200 then climbing left turn to 2300 direct MAWOC LOM and hold.

For inop ALS, increase S-LOC 17 Cat C/D visibility to 1 3/8 SM.

AWOS-3PT <b>123.775</b>	GREEN BAY APP CON* <b>120.2 338.2</b>	UNICOM <b>122.8 (CTAF)</b>
----------------------------	--	-------------------------------



CATEGORY	A	B	C	D
S-ILS 17	851-1/2		200 (200-1/2)	
S-LOC 17	1160-1/2 509 (600-1/2)		1160-1 509 (600-1)	
<b>C</b> CIRCLING	1200-1 549 (600-1)		1420-2 1/4 769 (800-2 1/4) 1480-2 3/4 829 (900-2 3/4)	

REIL Rwy 35  $\bullet$

MIRL Rwy 7-25  $\bullet$

HIRL Rwy 17-35  $\bullet$

FAF to MAP 4 NM

Knots	60	90	120	150	180
Min:Sec	4:00	2:40	2:00	1:36	1:20

EC-3, 15 MAY 2025 to 12 JUN 2025

EC-3, 15 MAY 2025 to 12 JUN 2025