

LOC/DME I-PXY 111.5 Chan 52	APP CRS 256°	Rwy ldg 7867 TDZE 683 Apt Elev 729
---	------------------------	---

LOC RWY 25L

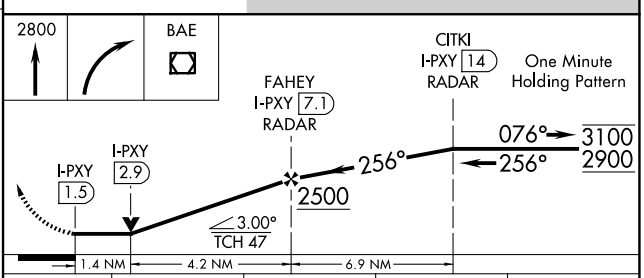
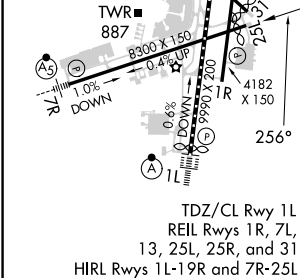
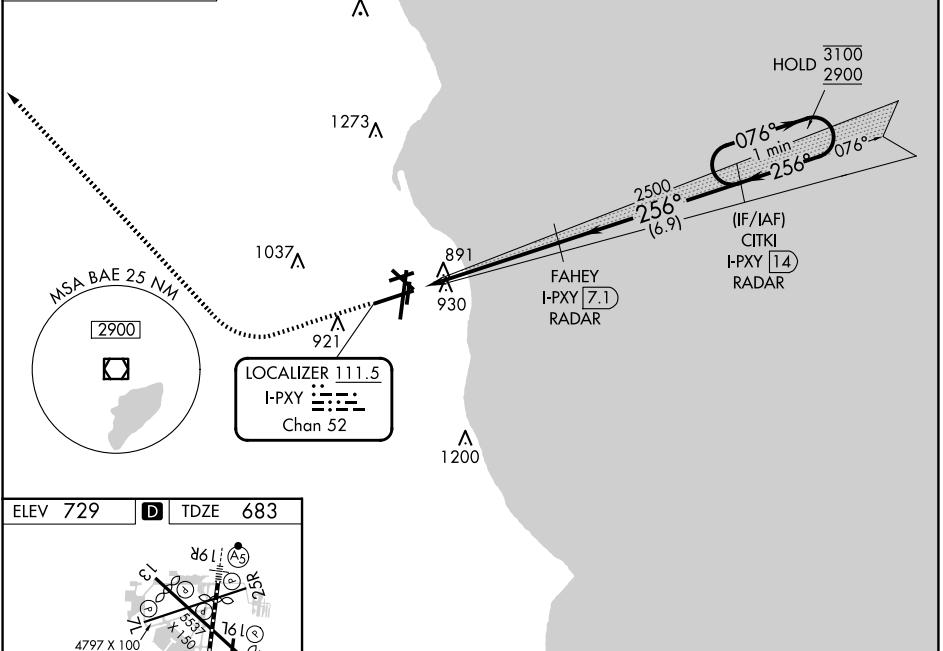
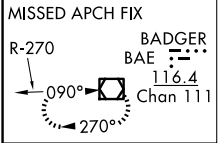
GENERAL MITCHELL INTL (MKE)

RADAR required for procedure entry. DME or RADAR required.

MISSED APPROACH: Climb to 2800 then right turn direct BAE VOR/DME and hold.

Rwy 25L helicopter visibility reduction below 3/4 SM NA.

D-ATIS 126.4	MILWAUKEE APP CON 126.5 307.0	MILWAUKEE TOWER 124.575 269.05	GND CON 121.8 263.125	CLNC DEL 120.8	CPDLC
------------------------	---	--	---------------------------------	--------------------------	-------



FAF to MAP 5.6 NM		CATEGORY	A	B	C	D
Knots		S-LOC 25L	1160-1	477 (500-1)	1160-1 3/8	477 (500-1 3/8)
Min:Sec		<input checked="" type="checkbox"/> CIRCLING	1240-1	511 (600-1)	1240-1 1/2	1360-2 631 (700-2)

EC-3, 15 MAY 2025 to 12 JUN 2025

EC-3, 15 MAY 2025 to 12 JUN 2025