

WAAS CH 56509 W13A	APP CRS 135°	Rwy Idg TDZE 656 Apt Elev 656
--	------------------------	---

RNAV (GPS) RWY 13

LA CROSSE RGNL (LSE)

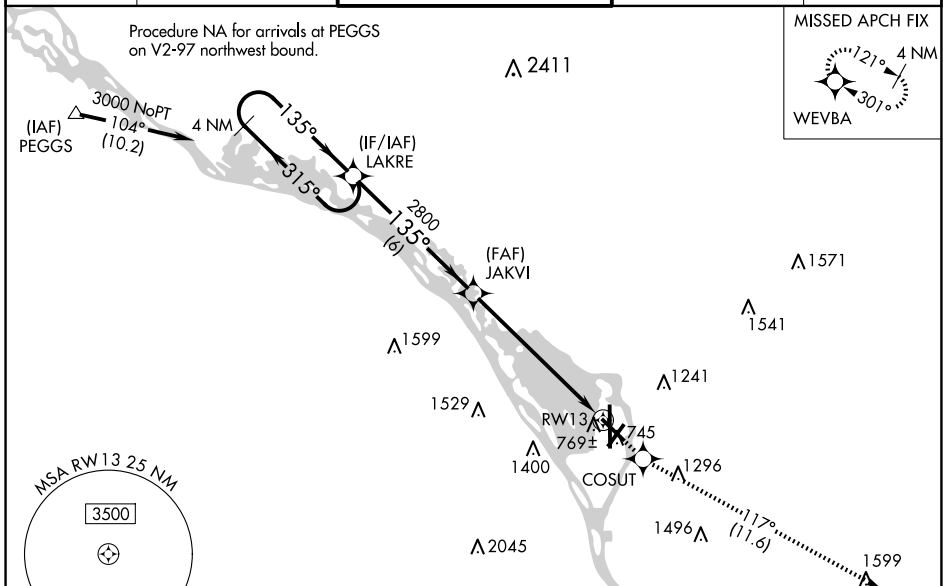
⚠ Baro-VNAV NA when using Winona altimeter setting. For uncompensated Baro-VNAV systems, LNAV/VNAV NA below -27° C (-1.6° F) or above 54° C (130° F). DME/DME RNP-0.3 NA. Helicopter visibility reduction below 3/4 SM NA. Circling to Rwy 22 NA at night.

⚠ -22°C

When local altimeter setting not received, use Winona altimeter setting and increase DA 53 feet, increase LPV and LNAV/VNAV visibility 1/4 mile all Cats, increase all MDA 60 feet, increase LNAV Cats C/D and Circling Cat B visibility 1/4 mile.

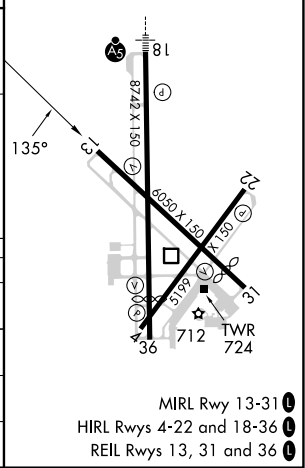
MISSED APPROACH:
Climb to 3000 direct COSUT and on track 117° to WEVBA and hold.

ATIS 124.95	MINNEAPOLIS CENTER 128.6 363.0	LA CROSSE TOWER * 118.45 (CTAF) 0 251.075	GND CON 121.8	UNICOM 122.95
-----------------------	--	---	-------------------------	-------------------------



ELEV 656	D TDZE 656
----------	-------------------

4 NM Holding Pattern	LAKRE	3000	COSUT	tr 117°	WEVBA
3000	← 315°	→ 135°	JAKVI 2800	VGSI and RNAV glidepath not coincident (VGSI Angle 3.00/TCH 33).	RWY 13
GP 3.00° TCH 45	6 NM	6.5 NM			
CATEGORY	A	B	C	D	
LPV DA		958-1	302 (400-1)		
LNAV/VNAV DA		1020-1¼	364 (400-1¼)		
LNAV MDA	1140-1	484 (500-1)	1140-1⅝ 484 (500-1⅝)	1140-1½ 484 (500-1½)	
C CIRCLING	1140-1 484 (500-1)	1460-1 804 (900-1)	1760-3 1104 (1200-3)	1820-3 1164 (1200-3)	



EC-3, 15 MAY 2025 to 12 JUN 2025

EC-3, 15 MAY 2025 to 12 JUN 2025