

WAAS CH <b>86617</b> <b>W14A</b>	APP CRS <b>135°</b>	Rwy Idg TDZE Apt Elev	<b>7302</b> <b>803</b> <b>808</b>
--	------------------------	-----------------------------	---

# RNAV (GPS) RWY 14

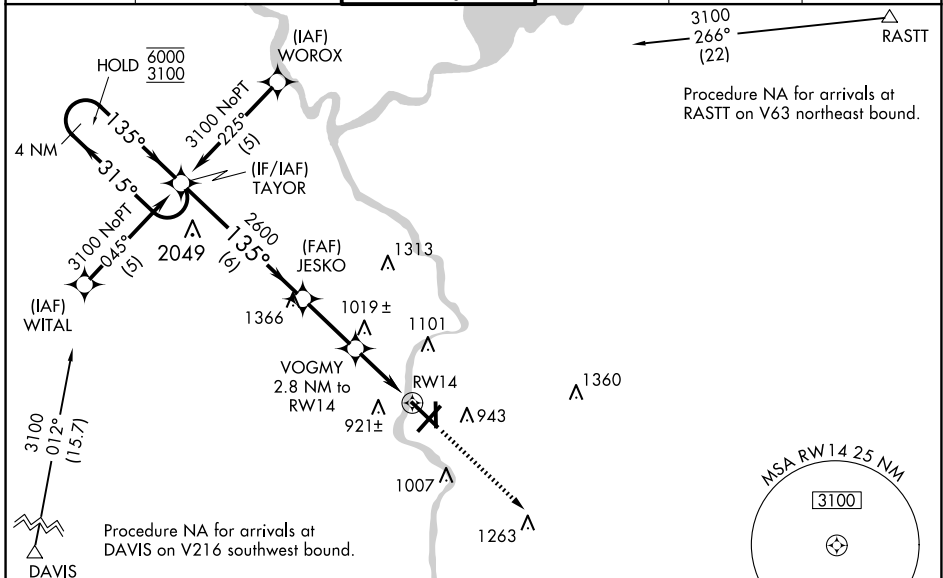
SOUTHERN WISCONSIN RGNL (JVL)

RNP APCH-GPS.

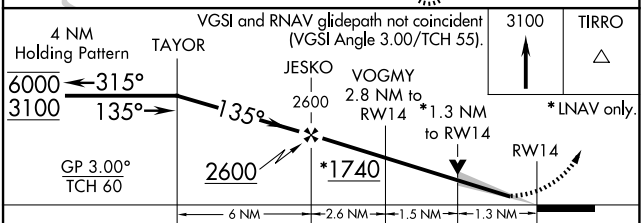
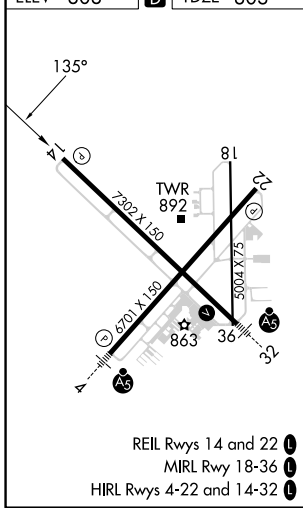
**⚠** Circling Rwy 18 NA at night. Baro-VNAV NA when using Rockford altimeter setting. For uncompensated Baro-VNAV systems, LNAV/VNAV NA below -16°C or above 47°C. VDP NA when using Rockford altimeter setting. When local altimeter setting not received, use Rockford altimeter setting and increase LPV DA to 1072 feet, LNAV/VNAV DA to 1291 feet, and all MDAs 80 feet; increase LPV all Cats visibility  $\frac{1}{8}$  SM, LNAV/VNAV all Cats visibility  $\frac{1}{4}$  SM, LNAV Cat C/D visibility  $\frac{1}{4}$  SM, and Circling Cat C/D visibility  $\frac{1}{4}$  SM.

MISSED APPROACH: Climb to 3100 direct TIRRO and hold.

ATIS <b>128.25</b>	ROCKFORD APP CON <b>121.0 327.0</b>	JANESVILLE TOWER ★ <b>118.8</b> (CTAF) <b>0 225.4</b>	GND CON <b>121.65</b>	CLNC DEL <b>121.65</b>	UNICOM <b>122.95</b>
-----------------------	--	--	--------------------------	---------------------------	-------------------------



ELEV 808	<b>D</b>	TDZE 803
----------	----------	----------



CATEGORY	A	B	C	D
LPV DA	1003- $\frac{3}{4}$		200 (200- $\frac{3}{4}$ )	
LNAV/VNAV DA	1222-1 $\frac{1}{8}$		419 (500-1 $\frac{1}{8}$ )	
LNAV MDA	1280-1	477 (500-1)	1280-1 $\frac{3}{8}$ 477 (500-1 $\frac{3}{8}$ )	1280-1 $\frac{3}{8}$ 477 (500-1 $\frac{3}{8}$ )
CIRCLING	1280-1 472 (500-1)	1320-1 512 (600-1)	1420-1 $\frac{3}{4}$ 612 (700-1 $\frac{3}{4}$ )	1460-2 652 (700-2)

EC-3, 15 MAY 2025 to 12 JUN 2025

EC-3, 15 MAY 2025 to 12 JUN 2025