

APP CRS	Rwy Idg	3395
092°	TDZE	617
	Apt Elev	620

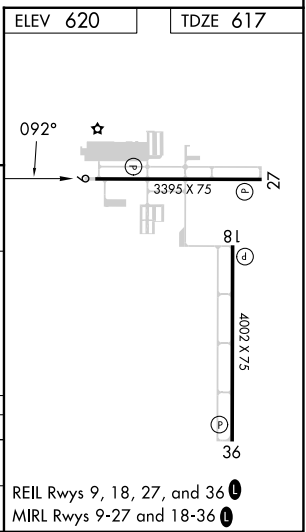
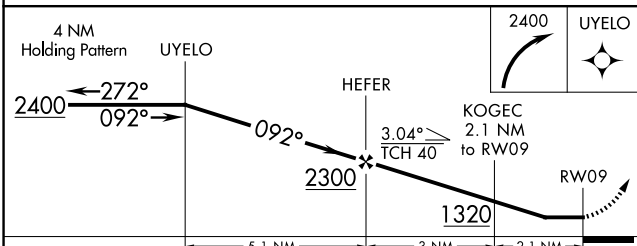
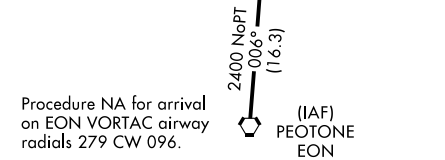
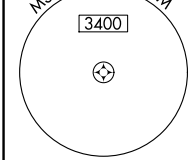
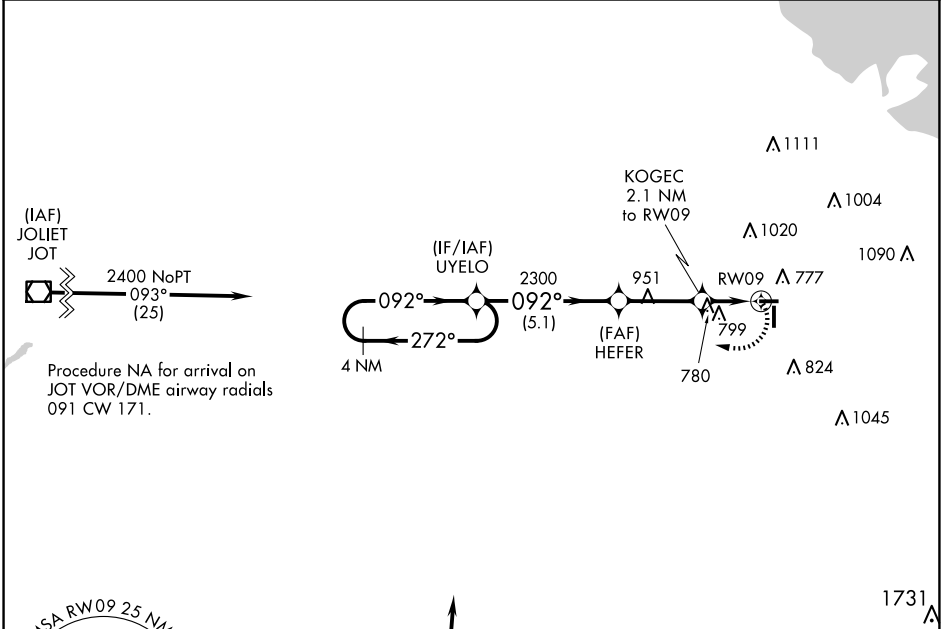
RNAV (GPS) RWY 9

LANSING MUNI (IGQ)

▼ Rwy 9 Straight-in and Circling minimums NA at night.
 Rwy 9 helicopter visibility reduction below 1 SM NA.
 DME/DME RNP-0.3 NA.

MISSED APPROACH: Climbing right turn to 2400 direct UYELO and hold.

AWOS-3PT 124.925	CHICAGO APP CON 128.2 285.6	UNICOM 122.7 (CTAF) 0
----------------------------	---------------------------------------	---------------------------------



CATEGORY	A	B	C	D
RNAV MDA	1080-1	463 (500-1)	NA	
CIRCLING	1140-1	520 (600-1)	NA	

EC-3, 15 MAY 2025 to 12 JUN 2025

EC-3, 15 MAY 2025 to 12 JUN 2025