

VOR BJB 109.8	APP CRS 232°	Rwy Idg 3897 TDZE 884 Apt Elev 887
-------------------------	------------------------	---------------------------------------------------------------

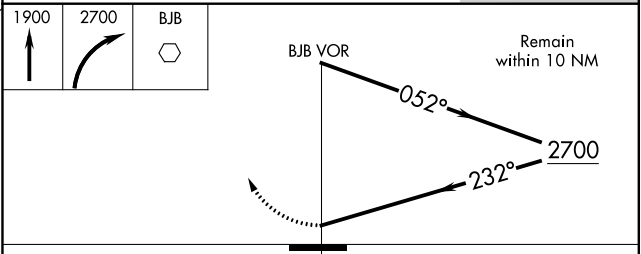
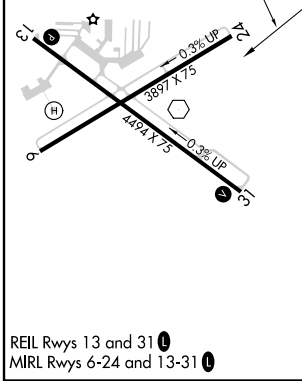
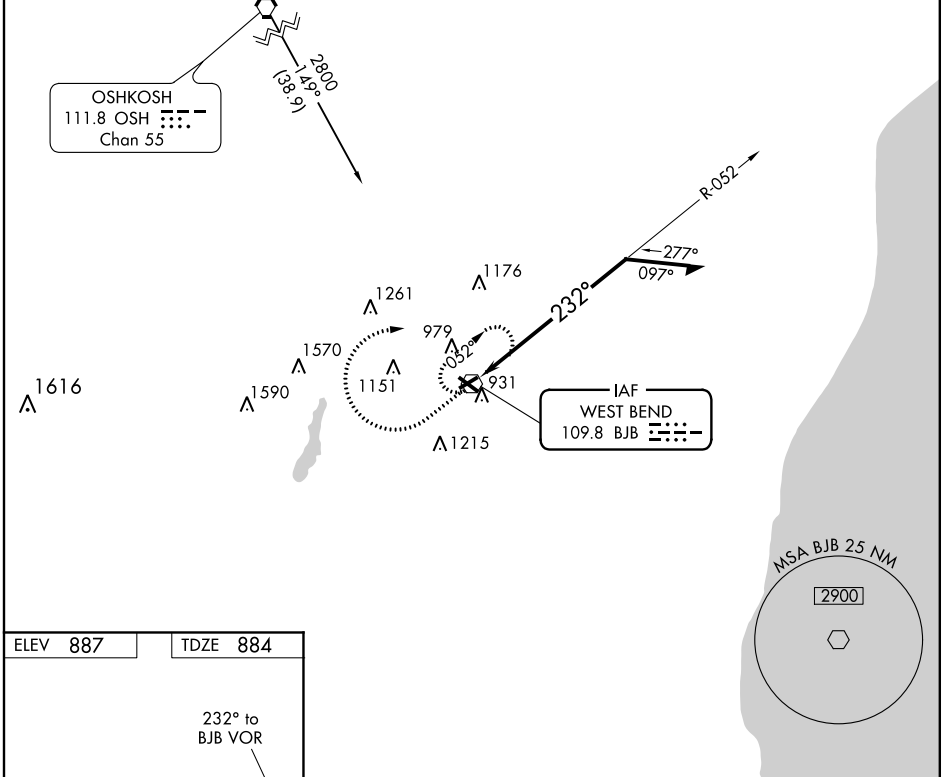
VOR RWY 24

WEST BEND MUNI (E/TB)

▼ Helicopter visibility reduction below 1 SM NA. When local altimeter setting not received, use Milwaukee/Lawrence J. Timmerman altimeter setting and increase all MDA 80 feet, increase all Cat C/D visibilities ¼ mile. Night landing: Rwy 6, 24 NA.

MISSED APPROACH: Climb to 1900 then climbing right turn 2700 direct BJB VOR and hold, continue climb-in-hold to 2700.

AWOS-3 120.0	MILWAUKEE APP CON 125.35 307.0	CLNC DEL 124.75	UNICOM 122.8 (CTAF) 0
------------------------	------------------------------------------	---------------------------	---------------------------------



CATEGORY	A	B	C	D
S-24	1500-1	616 (700-1)	1500-1¾ 616 (700-1¾)	1500-2 616 (700-2)
CIRCLING	1500-1	613 (700-1)	1500-1¾ 613 (700-1¾)	1520-2 633 (700-2)

EC-3, 21 JUN 2018 to 19 JUL 2018

EC-3, 21 JUN 2018 to 19 JUL 2018