

# RNAV (GPS) RWY 6

WEST BEND MUNI (E/TB)

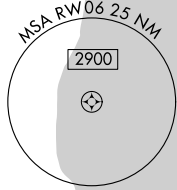
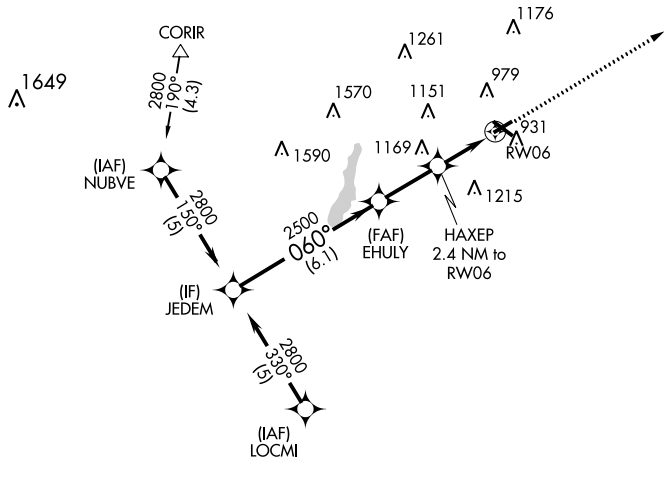
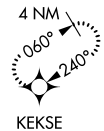
APP CRS	Rwy Idg	<b>3897</b>
<b>060°</b>	TDZE	<b>887</b>
	Apt Elev	<b>887</b>

**▼** DME/DME RNP-0.3 NA. When local altimeter setting not received, use Milwaukee/Lawrence J.  
**▲** Timmerman altimeter setting and increase all MDA 80 feet and LNAV and Circling Cat C/D visibility ¼ mile. Night landing: Rwy 6 NA. Helicopter visibility reduction below 1 SM NA.

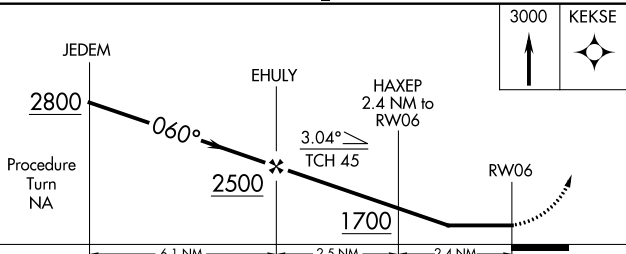
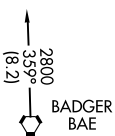
**MISSED APPROACH:**  
 Climb to 3000 direct  
 KEKSE and hold.

AWOS-3 <b>120.0</b>	MILWAUKEE APP CON <b>125.35 307.0</b>	CLNC DEL <b>124.75</b>	UNICOM <b>122.8 (CTAF) 0</b>
------------------------	--	---------------------------	---------------------------------

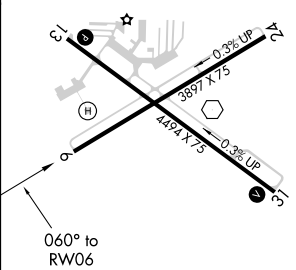
Procedure NA for arrivals  
 at CORIR  
 via V63-191 northbound.



Procedure NA for arrivals  
 on BAE VORTAC  
 airway radials 302 CW 001.



ELEV 887	TDZE 887
----------	----------



CATEGORY	A	B	C	D
LNVA MDA	1420-1	533 (600-1)	1420-1½ 533 (600-1½)	1420-1¾ 533 (600-1¾)
CIRCLING	1420-1	533 (600-1)	1460-1½ 573 (600-1½)	1520-2 633 (700-2)

REIL Rwy 13 and 31  
 MRL Rwy 6-24 and 13-31

EC-3, 01 FEB 2018 to 01 MAR 2018

EC-3, 01 FEB 2018 to 01 MAR 2018