

WAAS CH <b>90330</b> <b>W13A</b>	APP CRS <b>127°</b>	Rwy Idg <b>5200</b> TDZE <b>1196</b> Apt Elev <b>1201</b>
--	------------------------	---

# RNAV (GPS) RWY 13

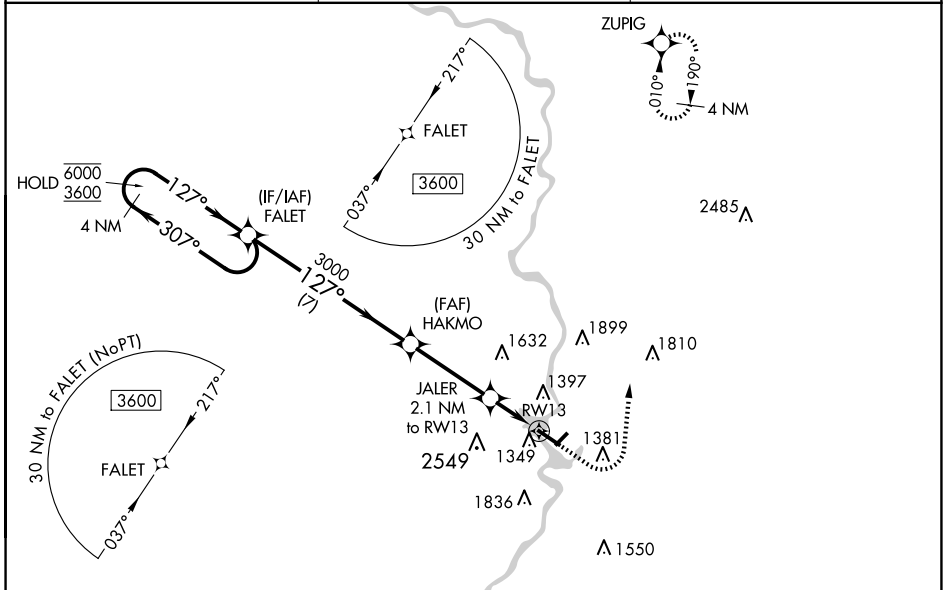
WAUSAU DOWNTOWN (A U W)

RNP APCH.

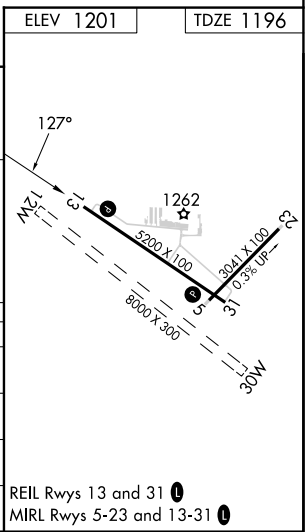
**▼** Circling NA to Rwsy 12W and 30W.  
**▲** Circling NA southwest of Rwy 13-31.  
 For uncompensated Baro-VNAV systems, LNAV/VNAV NA below -17°C or above 54°C.

MISSED APPROACH: Climb to 1800 then climbing left turn to 4000 direct ZUPIG and hold.

ASOS <b>125.925</b>	MINNEAPOLIS CENTER <b>124.4 317.7</b>	UNICOM <b>122.7 (CTAF) 0</b>
------------------------	--	---------------------------------



4 NM Holding Pattern		FALET	1800	4000	ZUPIG
6000 ← 307°		FALET	1800	4000	ZUPIG
3600 → 127°		HAKMO	*LNAV only.		
GP 3.00°		HAKMO	JALER	JALER	JALER
TCH 43		3000	2.1 NM to RWY13	2.1 NM to RWY13	2.1 NM to RWY13
		3000	*1.1 NM to RWY13	*1.1 NM to RWY13	*1.1 NM to RWY13
		7 NM	3.4 NM	1 NM	1.1 NM
CATEGORY	A	B	C	D	
LPV DA		1446-3/4	250 (300-3/4)		
LNAV/VNAV DA		1534-1 1/8	338 (400-1 1/8)		
LNAV MDA	1600-1	404 (400-1)	1600-1 1/8	404 (400-1 1/8)	
<b>C</b> CIRCLING	1840-1	639 (700-1)	1960-2 1/4	2260-3	
			759 (800-2 1/4)	1059 (1100-3)	



EC-3, 15 MAY 2025 to 12 JUN 2025

EC-3, 15 MAY 2025 to 12 JUN 2025