

VOR/DME LWV 108.8 Chan 25	APP CRS 211°	Rwy Ldg TDZE Apt Elev	4000 429 429
---	------------------------	-----------------------------	---

VOR/DME RWY 22

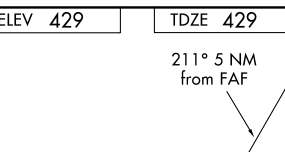
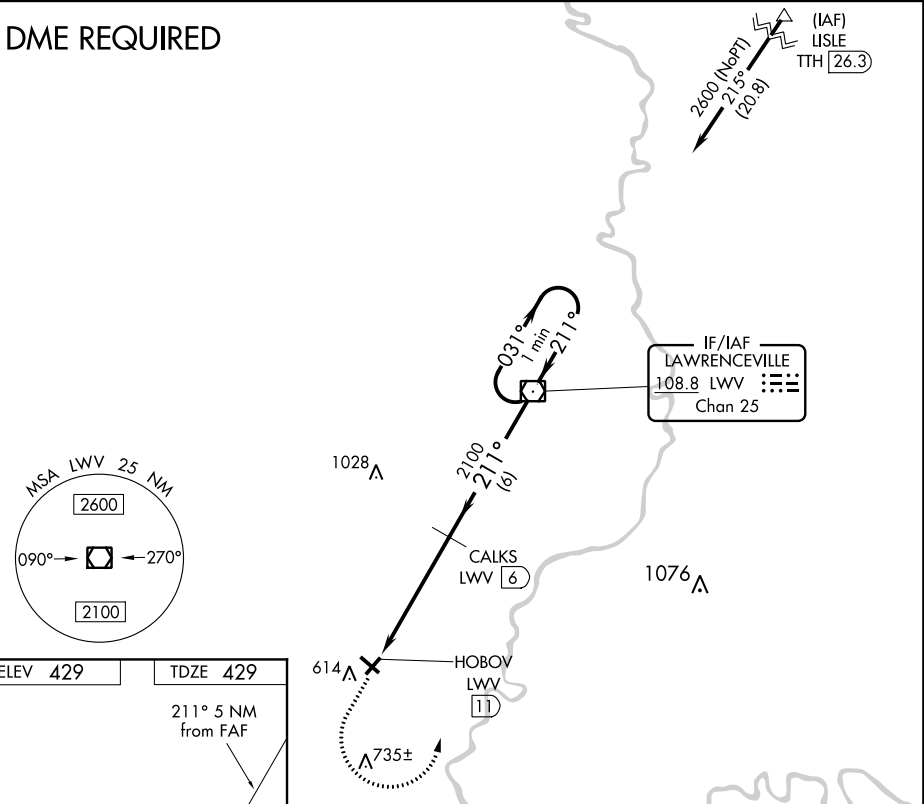
MOUNT CARMEL MUNI (AJG)

⚠ When local altimeter setting not received, use Lawrenceville altimeter setting and increase all MDA 40 feet and all Cat C visibility $\frac{1}{8}$ mile. Procedure NA at night. Helicopter visibility reduction below 1 SM NA.

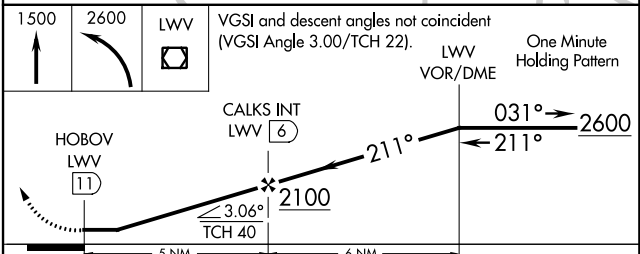
MISSED APPROACH: Climb to 1500 then climbing left turn to 2600 direct LWV VOR/DME and hold.

AWOS-3 134.9	EVANSVILLE APP CON* 125.6 343.7	UNICOM 122.7 (CTAF) 0
------------------------	---	---------------------------------

DME REQUIRED



ELEV 429	TDZE 429
211° 5 NM from FAF	
REIL Rws 4, 13, 22 and 31	
MIRL Rws 4-22 and 13-31	
FAF to MAP 5 NM	
Knots	60 90 120 150 180
Min:Sec	5:00 3:20 2:30 2:00 1:40



CATEGORY	A	B	C	D
S-22	1000-1	571 (600-1)	1000-1 $\frac{1}{8}$ 571 (600-1 $\frac{1}{8}$)	NA
CIRCLING	1000-1	571 (600-1)	1000-1 $\frac{1}{8}$ 571 (600-1 $\frac{1}{8}$)	NA

EC-3, 24 MAY 2018 to 21 JUN 2018

EC-3, 24 MAY 2018 to 21 JUN 2018