

APP CRS	Rwy Idg	3299
083°	TDZE	964
	Apt Elev	967

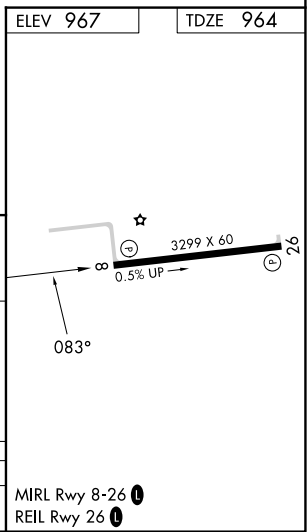
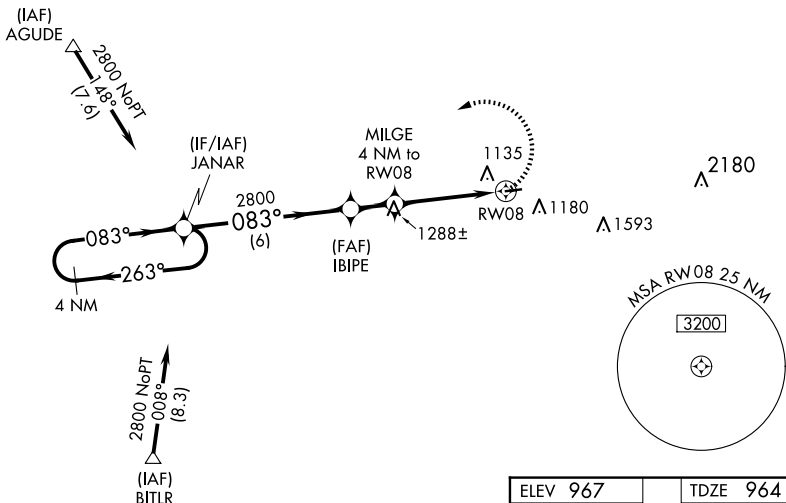
RNAV (GPS) RWY 8

BOYCEVILLE MUNI (3T3)

RNP APCH.	MISSED APPROACH: Climbing left turn to 2800 direct JANAR and hold.
▼ Use New Richmond Rgnl altimeter setting. ▲ NA When VGS1 inop, procedure NA at night. Helicopter visibility reduction below 1 SM NA.	

RNH AWOS-3 120.0	MINNEAPOLIS CENTER 125.3 335.6	UNICOM 122.8 (CTAF) 0
----------------------------	--	---------------------------------

Procedure NA for arrivals at AGUDE via V78 westbound.



VGS1 and descent angles not coincident (VGS1 Angle 4.00/TCH 34).

4 NM Holding Pattern	JANAR	IBIPE	MILGE 4 NM to RW08	RW08
2800 ← 263°	← 083°	← 2800	← 2280	← 083°
← 083°	← 083°	← 083°	← 083°	← 083°
6 NM		1.6 NM	4 NM	

CATEGORY	A	B	C	D
LNAV MDA	1580-1	616 (700-1)	1580-1¾ 616 (700-1¾)	NA

EC-3, 15 MAY 2025 to 12 JUN 2025

EC-3, 15 MAY 2025 to 12 JUN 2025