

APP CRS	Rwy Idg	<b>3900</b>
<b>269°</b>	TDZE	<b>691</b>
	Apt Elev	<b>691</b>

# RNAV (GPS) RWY 27

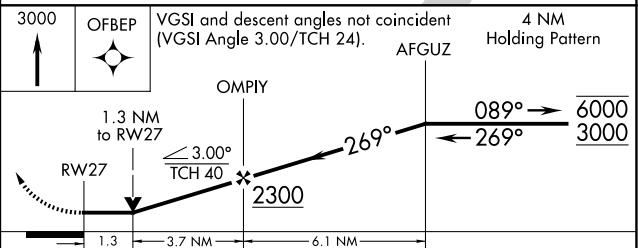
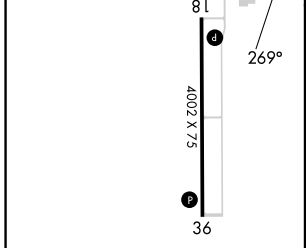
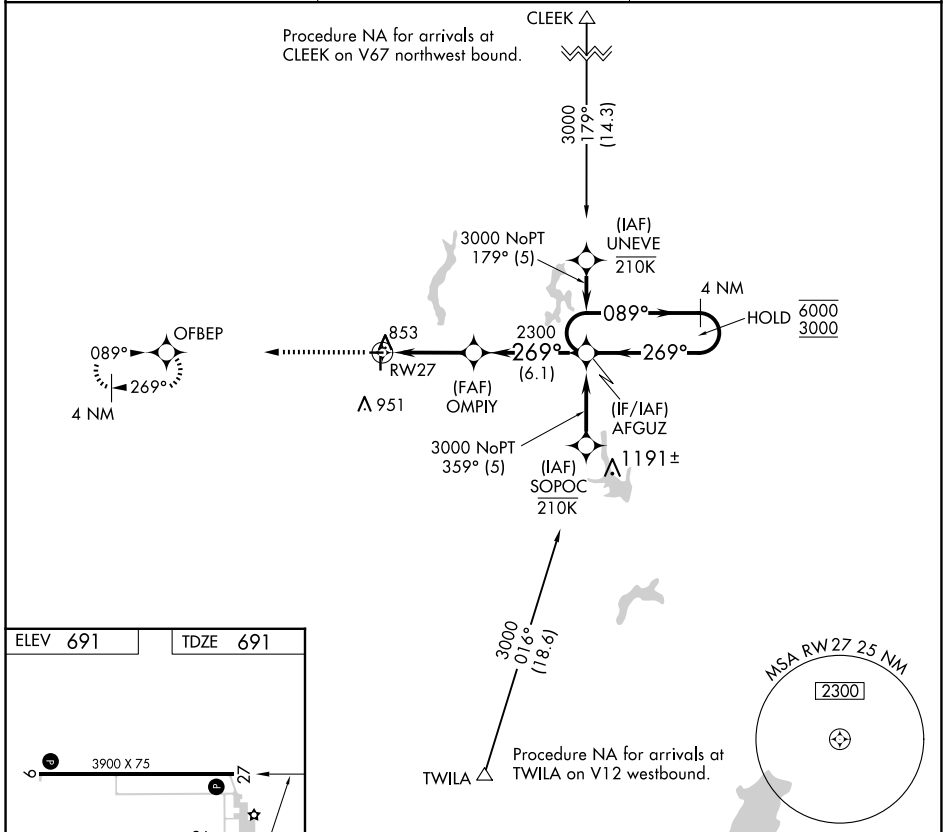
LITCHFIELD MUNI (3L1F)

RNP APCH - GPS.

**⚠** Rwy 27 helicopter visibility reduction below 3/4 SM NA. When local altimeter setting not received, use Taylorville altimeter setting and increase all MDA 80 feet and LNAV Cat C visibility 1/8 SM. VDP NA when using Taylorville altimeter setting.

MISSED APPROACH: Climb to 3000 direct OFBEP and hold.

AWOS-3PT <b>118.175</b>	ST. LOUIS APP CON <b>124.2 353.9</b>	UNICOM <b>122.8 (CTAF) 0</b>
----------------------------	---	---------------------------------



MIRL Rwy 9-27 and 18-36 <b>0</b>				
REIL Rwy 9, 18, 27 and 36 <b>0</b>				
CATEGORY	A	B	C	D
LNAV MDA	1120-1	429 (500-1)	1120-1 1/4 429 (500-1 1/4)	NA

EC-3, 15 MAY 2025 to 12 JUN 2025

EC-3, 15 MAY 2025 to 12 JUN 2025