

WAAS CH 58203 W18A	APP CRS 179°	Rwy Idg TDZE 686 Apt Elev 691	4002
--	------------------------	---	-------------

RNAV (GPS) RWY 18

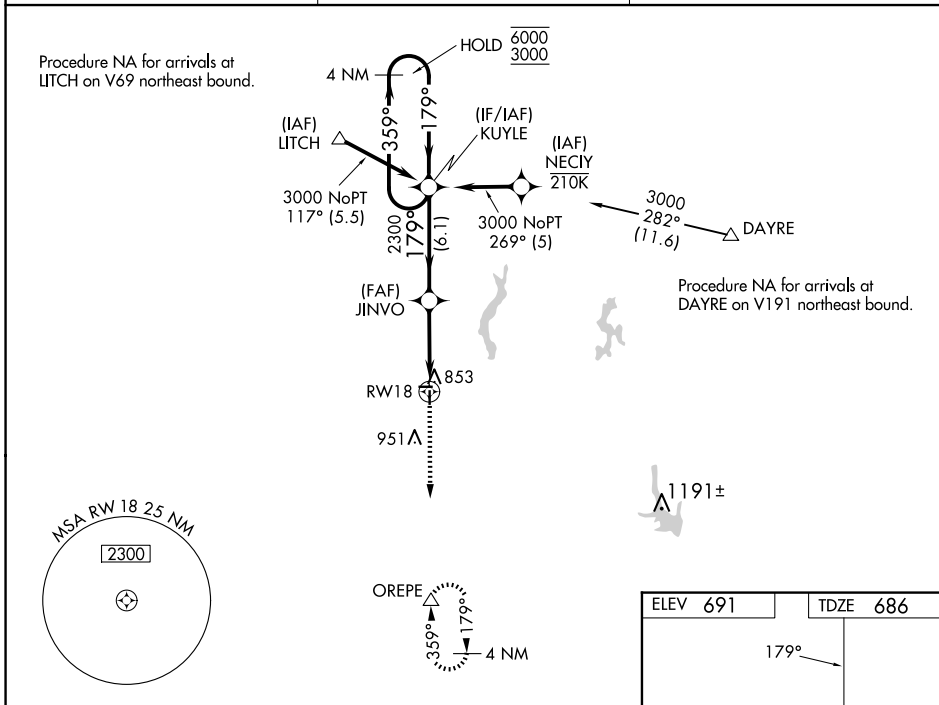
LITCHFIELD MUNI (3LF)

RNP APCH - GPS.

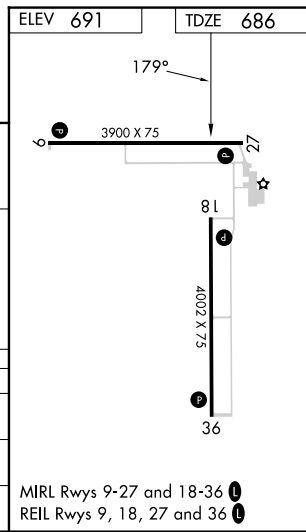
⚠ Baro-VNAV and VDP NA when using Taylorville altimeter setting. Rwy 18 helicopter visibility reduction below $\frac{3}{4}$ SM NA. For uncompensated Baro-VNAV systems, LNAV/VNAV NA below -16°C or above 54°C. When local altimeter setting not received, use Taylorville altimeter setting and increase LPV DA to 1025 feet and all visibilities $\frac{1}{8}$ SM, increase LNAV/VNAV DA to 1146 feet and all visibilities $\frac{1}{4}$ SM, increase all MDAs 80 feet and LNAV visibility Cat C $\frac{1}{8}$ SM.

MISSED APPROACH: Climb to 3000 direct OREPE and hold.

AWOS-3PT 118.175	ST. LOUIS APP CON 124.2 353.9	UNICOM 122.8 (CTAF) 0
----------------------------	---	---------------------------------



4 NM Holding Pattern		VGS1 and RNAV glidepath not coincident (VGS1 Angle 3.00/TCH 23).		3000	OREPE
KUYLE		JINVO			
6000	← 359°				
3000	→ 179°				
GP 3.00°					
TCH 40					
6.1 NM		3.6 NM	1.3 NM to RW18		
CATEGORY	A	B	C	D	
LPV DA	952- $\frac{7}{8}$ 266 (300- $\frac{7}{8}$)			NA	
LNAV/VNAV DA	1073-1 $\frac{1}{8}$ 387 (400-1 $\frac{1}{8}$)			NA	
LNAV MDA	1120-1	434 (500-1)	1120-1 $\frac{1}{4}$ 434 (500-1 $\frac{1}{4}$)	NA	



EC-3, 15 MAY 2025 to 12 JUN 2025

EC-3, 15 MAY 2025 to 12 JUN 2025

MIRL Rwy 9-27 and 18-36
REIL Rwy 9, 18, 27 and 36