

APP CRS	Rwy Idg	<b>3900</b>
<b>089°</b>	TDZE	<b>690</b>
	Apt Elev	<b>690</b>

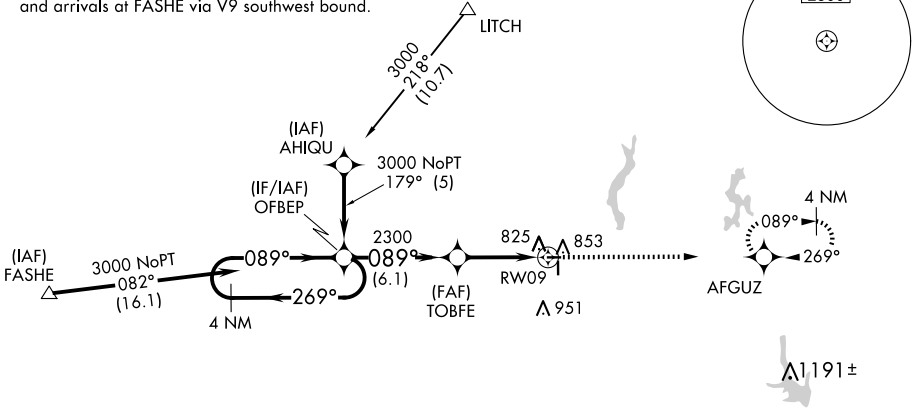
# RNAV (GPS) RWY 9

LITCHFIELD MUNI (3LF)

RNP APCH.	<p><b>⚠</b> When local altimeter setting not received, use Taylorville altimeter setting and increase all MDA 80 feet and LNAV Cat C visibility to 1½ SM. VDP NA with Taylorville altimeter setting. Rwy 9 helicopter visibility reduction below ¾ SM NA.</p>	MISSED APPROACH: Climb to 3000 direct AFGUZ and hold.
-----------	---	---

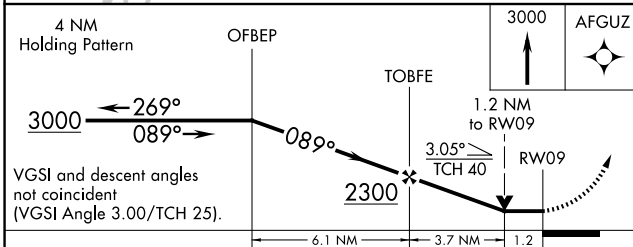
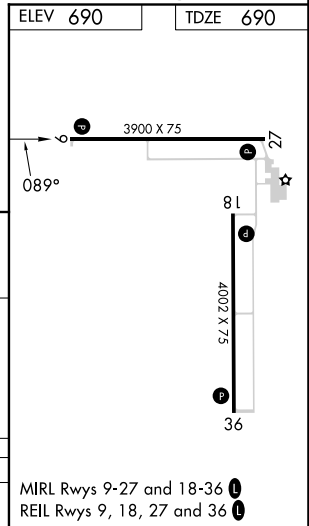
AWOS-3PT <b>118.175</b>	ST. LOUIS APP CON <b>124.2 353.9</b>	UNICOM <b>122.8 (CTAF) 0</b>
----------------------------	---	---------------------------------

Procedure NA for arrivals at LITCH via V69 northbound and arrivals at FASHE via V9 southwest bound.



EC-3, 15 MAY 2025 to 12 JUN 2025

EC-3, 15 MAY 2025 to 12 JUN 2025



CATEGORY	A	B	C	D
LNAV MDA	1140-1	450 (500-1)	1140-1 3/8 450 (500-1 3/8)	NA

MIRL Rwy 9-27 and 18-36  
REIL Rwy 9, 18, 27 and 36