

WAAS CH 57939 W09A	APP CRS 093°	Rwy Idg TDZE 884 Apt Elev 884	4192 884 884
--	------------------------	---	---

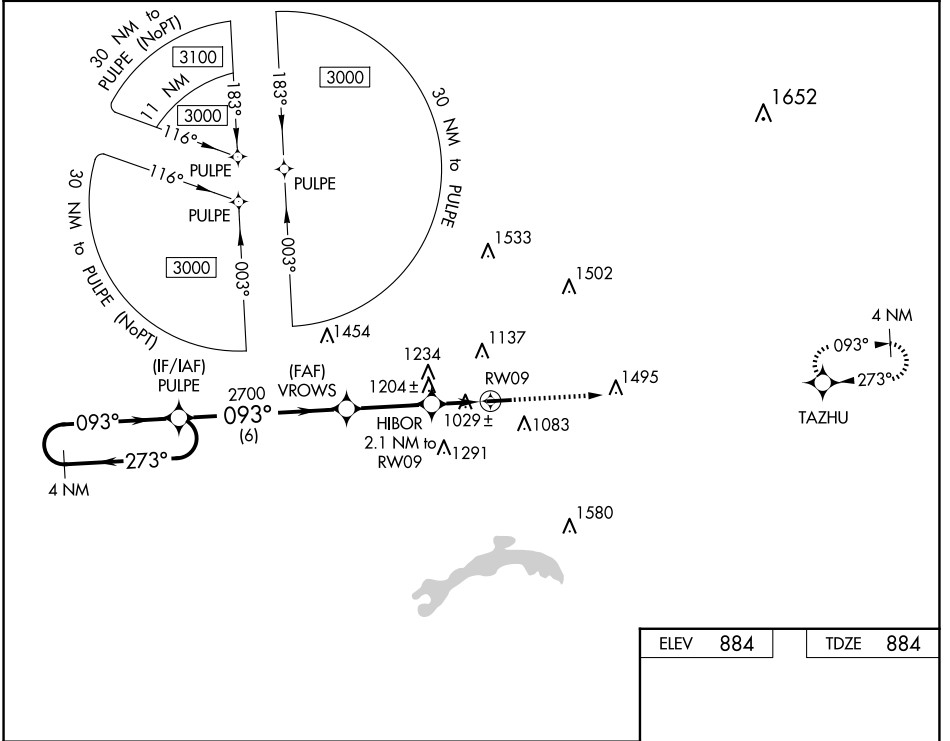
RNAV (GPS) RWY 9

LICKING COUNTY RGNL (VTA)

▼ Rwy 9 helicopter visibility reduction below 1 SM NA. DME/DME RNP-0.3 NA.
▲ Straight-in Rwy 9 NA at night, Circling Rwy 9 NA at night.

MISSED APPROACH:
Climb to 3000 direct TAZHU and hold.

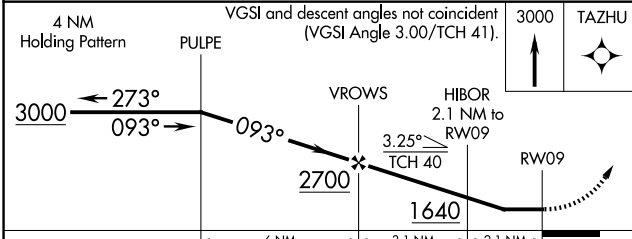
ASOS 121.125	COLUMBUS APP CON 125.95 317.775	CLNC DEL 125.175	UNICOM 122.7 (CTAF)	123.3 0
------------------------	---	----------------------------	-------------------------------	-----------------------



EC-2, 15 MAY 2025 to 12 JUN 2025

EC-2, 15 MAY 2025 to 12 JUN 2025

ELEV 884	TDZE 884
-----------------	-----------------



CATEGORY	A	B	C	D
LP MDA	1280-1	396 (400-1)	1280-1 1/8	396 (400-1 1/8)
LNAV MDA	1460-1	576 (600-1)	1460-1 5/8	576 (600-1 5/8)
C CIRCLING	1460-1 576 (600-1)	1480-1 596 (600-1)	1760-2 1/2 876 (900-2 1/2)	1760-2 3/4 876 (900-2 3/4)

