

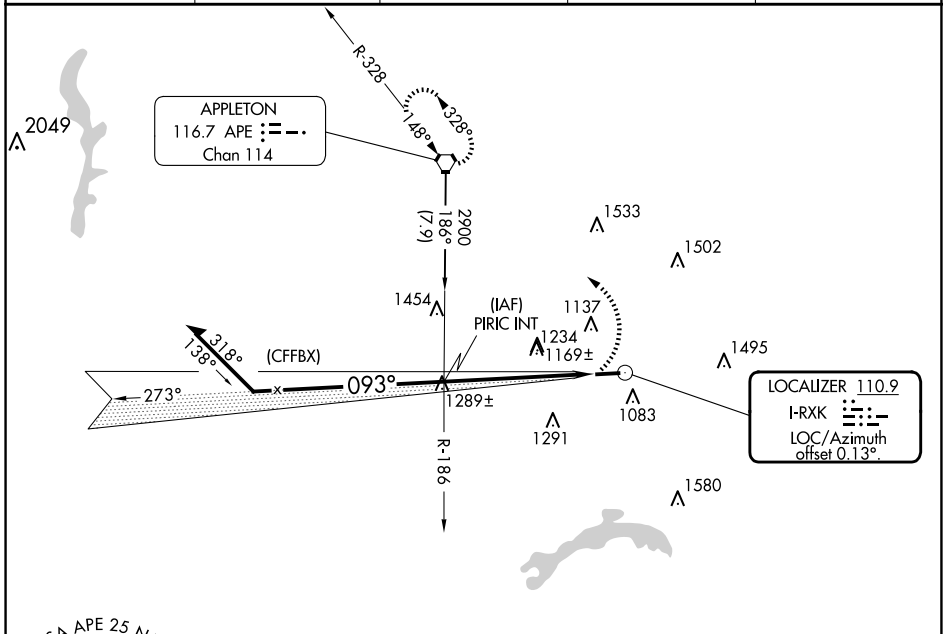
LOC I-RXK 110.9	APP CRS 093°	Rwy Idg TDZE Apt Elev	4192 884 884
---------------------------	------------------------	-----------------------------	---

LOC RWY 9

LICKING COUNTY RGNL (VTA)

▼ Rwy 9 helicopter visibility reduction below 1 SM NA. Straight-in and Circling Rwy 9 NA at night.
▲ NA MISSED APPROACH: Climbing left turn to 2900 direct APE VORTAC and hold.

ASOS 121.125	COLUMBUS APP CON 125.95 317.775	CLNC DEL 125.175	UNICOM 122.7 (CTAF)	123.3 0
------------------------	---	----------------------------	-------------------------------	-----------------------

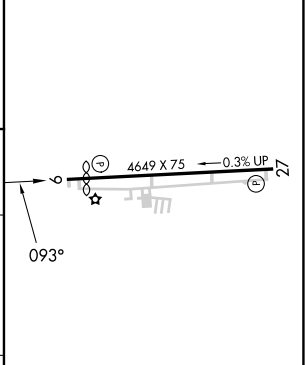


EC-2, 15 MAY 2025 to 12 JUN 2025

EC-2, 15 MAY 2025 to 12 JUN 2025



ELEV 884	TDZE 884
----------	----------



Remain within 10 NM	PIRIC INT	2900	APE
273°	093°	2700	3.00° TCH 40
VGSi and descent angles not coincident (VGSi Angle 3.00/TCH 41).			
5.6 NM			

CATEGORY	A	B	C	D
S-9	1420-1	536 (600-1)	1420-1½	536 (600-1½)
C CIRCLING	1480-1	596 (600-1)	1760-2½ 876 (900-2½)	1760-2¾ 876 (900-2¾)

MIRL Rwy 9-27 0	REIL Rwys 9 and 27 0				
FAF to MAP 5.6 NM					
Knots	60	90	120	150	180
Min:Sec	5:36	3:44	2:48	2:14	1:52