

| | | | |
|--|------------------------|---|---|
| VOR/DME BSV 114.05 Chan 87 (Y) | APP CRS 127° | Rwy Idg TDZE Apt Elev 1164 | N/A N/A 1164 |
|--|------------------------|---|---|

VOR-A

CARROLL COUNTY-TOLSON (T50)

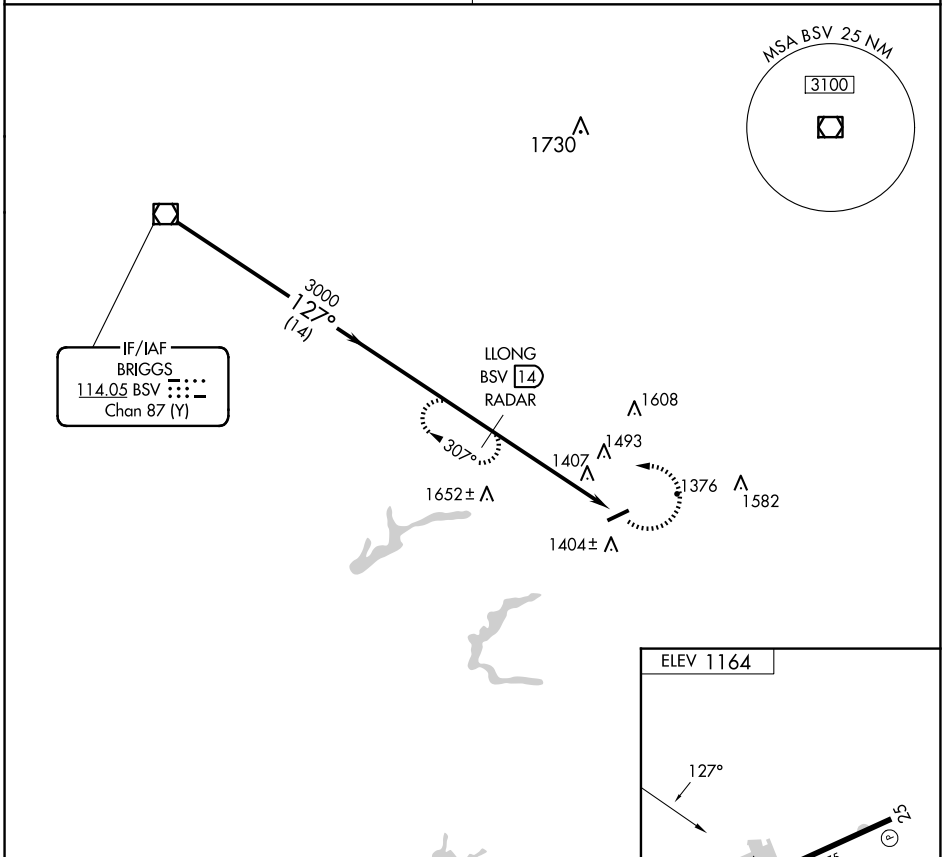
DME or RADAR required.

Procedure NA at night. Use Akron-Canton altimeter setting; when not received, use New Philadelphia altimeter setting and increase MDA 20 feet.

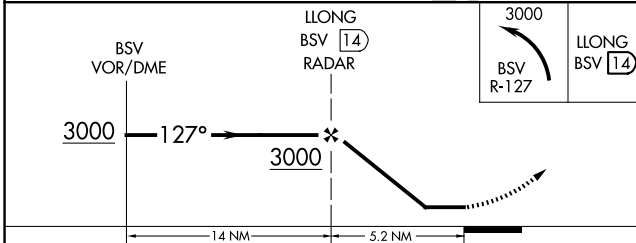
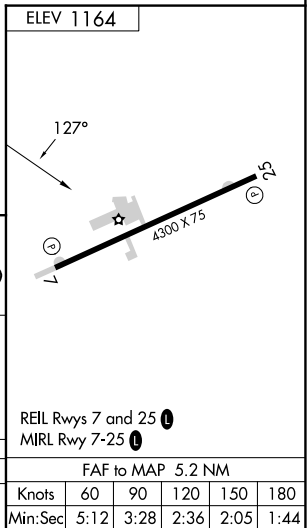
MISSED APPROACH: Climbing left turn to 3000 on BSV VOR/DME R-127 to LLONG/BSV 14 DME/RADAR and hold.

CLEVELAND APP CON ★
125.5 371.875

UNICOM
122.7 (CTAF) **1**



IF/IAF
BRIGGS
114.05 BSV
Chan 87 (Y)



| | | | | | | | | | | |
|----------|--------|-------------|----|---|-------------------|------|------|------|------|------|
| CATEGORY | A | B | C | D | FAF to MAP 5.2 NM | | | | | |
| CIRCLING | 1940-1 | 777 (800-1) | NA | | Knots | 60 | 90 | 120 | 150 | 180 |
| | | | | | Min:Sec | 5:12 | 3:28 | 2:36 | 2:05 | 1:44 |

VOR-A

EC-2, 15 MAY 2025 to 12 JUN 2025

EC-2, 15 MAY 2025 to 12 JUN 2025