

VOR OLK 110.4	APP CRS 114°	Rwy ldg 2623 TDZE 836 Apt Elev 836
-------------------------	------------------------	---

VOR RWY 13

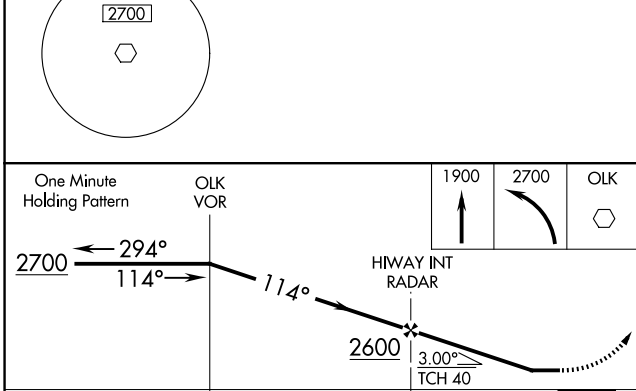
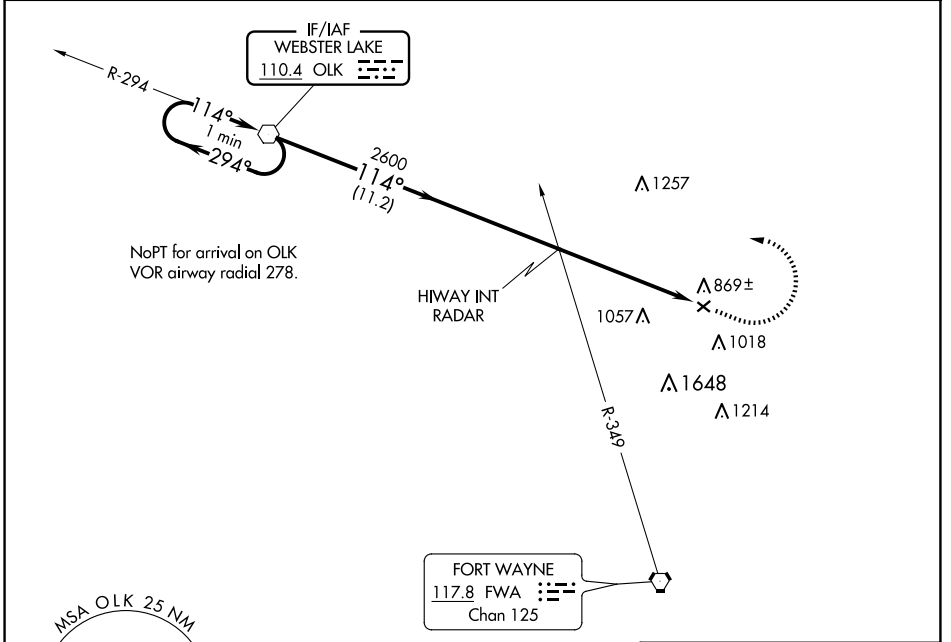
SMITH FLD (SMD)

⚠ Rwy 13 helicopter visibility reduction below 1 SM NA. Procedure NA at night. When local altimeter setting not received, use Fort Wayne Intl altimeter setting and increase all MDA 40 feet and S-13 Cat C visibility 1/8 SM.

⚠ NA
⚠ -22°C

MISSED APPROACH: Climb to 1900 then climbing left turn to 2700 direct OLK VOR and hold.

AWOS-3 124.55	FORT WAYNE APP CON 127.2 284.6	UNICOM 122.8 (CTAF) 0
-------------------------	--	---------------------------------



ELEV	836	TDZE	836
------	-----	------	-----

114°

1900

2700

OLK

3126 X 100

2222 X 60

MIRL Rwy 5-23 and 13-31

FAF to MAP 5.4 NM

Knots	60	90	120	150	180
Min:Sec	5:24	3:36	2:42	2:10	1:48

CATEGORY	A	B	C	D
S-13	1360-1	524 (600-1)	1360-1½ 524 (600-1½)	NA
C CIRCLING	1400-1	564 (600-1)	1940-3 1104 (1200-3)	NA

EC-2, 15 MAY 2025 to 12 JUN 2025

EC-2, 15 MAY 2025 to 12 JUN 2025